

REPORTS OVERVIEW



The data educators need to improve student outcomes

RAPID helps teachers and instructional leaders make a greater impact on student achievement by assessing the skills most predictive of reading success and delivering data that is:



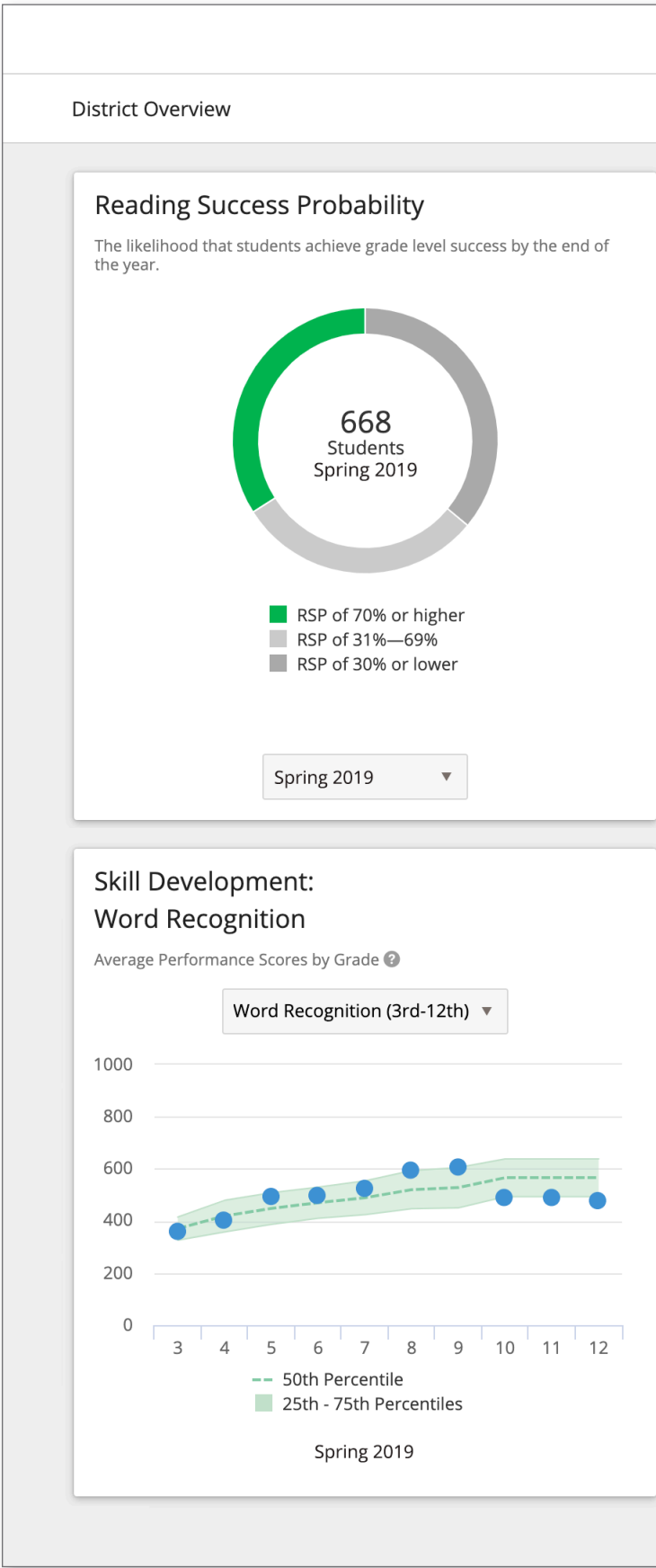
Immediately available



Easy to access



Simple to interpret



Lexia Demo District

Historical Report

District Export

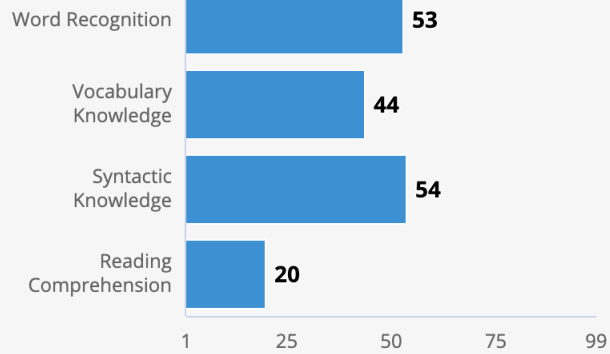
Filter

District Profile

Median Percentile Ranks ?

K - 2nd

3rd - 12th



Spring 2019

Comprehension

Sentence Comprehension

K-2nd

(Listening)



26 Students

Passage Comprehension

K-2nd

(Reading)



73 Students

Reading Comprehension

3rd-12th



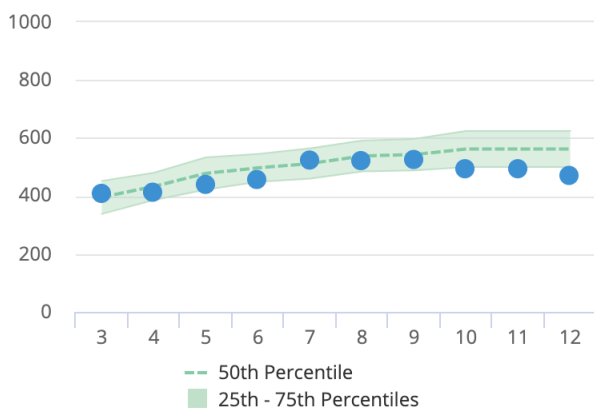
486 Students

Spring 2019

Skill Development:
Academic Language

Average Performance Scores by Grade ?

Vocabulary Knowledge (3rd-12th) ▼

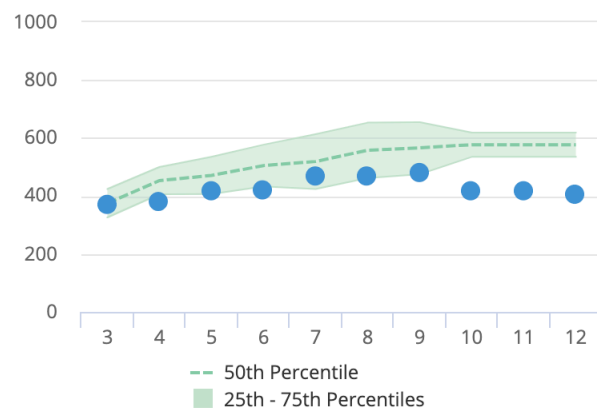


Spring 2019

Skill Development:
Reading Comprehension

Average Performance Scores by Grade ?

Reading Comprehension (3rd-12th)



Spring 2019

RAPID helps educators answer these essential questions:

Are students on track for end-of-year reading success?

What are students' strengths and weaknesses?

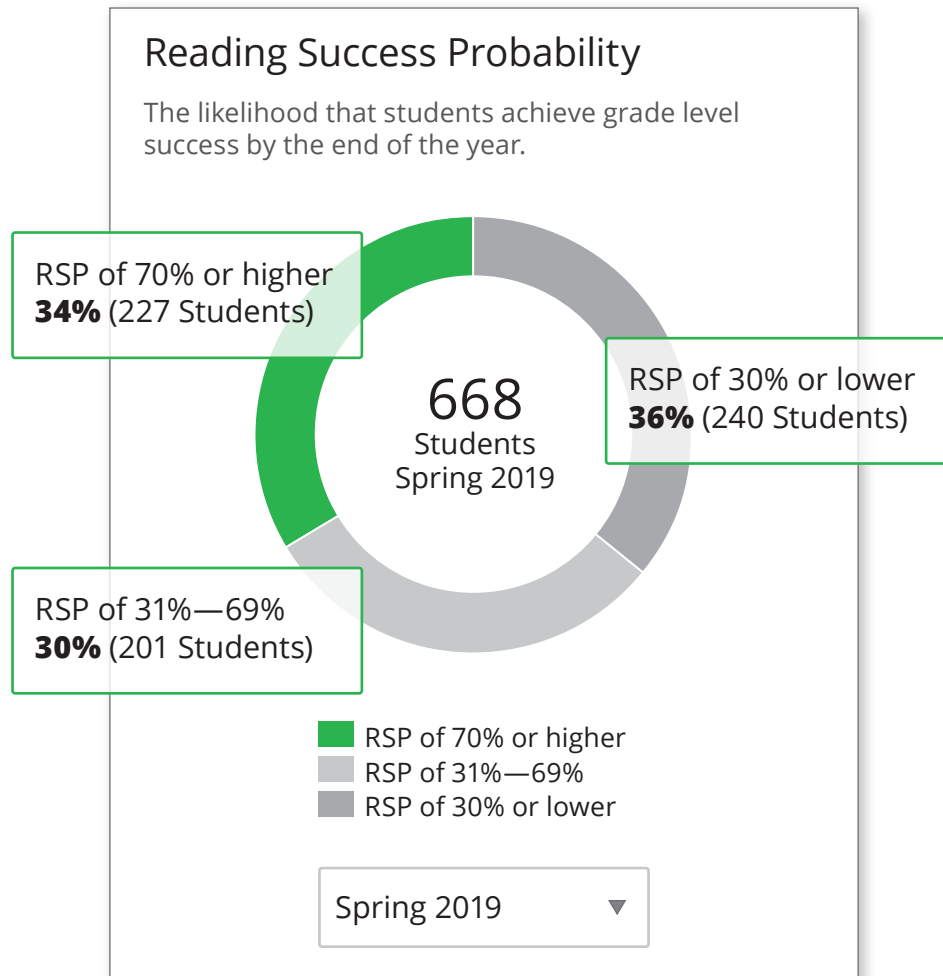
How many students are performing on, above, and below grade level?

How have students' literacy skills developed through the year?



Are students on track for end-of-year reading success?

The **Reading Success Probability** indicates the likelihood of success on a gold-standard, national outcome measure, based on student performance in the most recent assessment period.



Instructional leaders can use the aggregated Reading Success Probability data for the school and district to set instructional priorities and allocate resources to support student achievement.



Teachers can view the Reading Success Probability score for the whole class, and for individual students. They can use this data to make effective instructional decisions and determine if further differentiation is needed to support struggling students.

What are students' strengths and weaknesses?

Using **percentile ranks**, RAPID develops profiles of students' strengths and areas requiring instructional focus. The **Profiles** inform decisions around systematic district and school improvement:

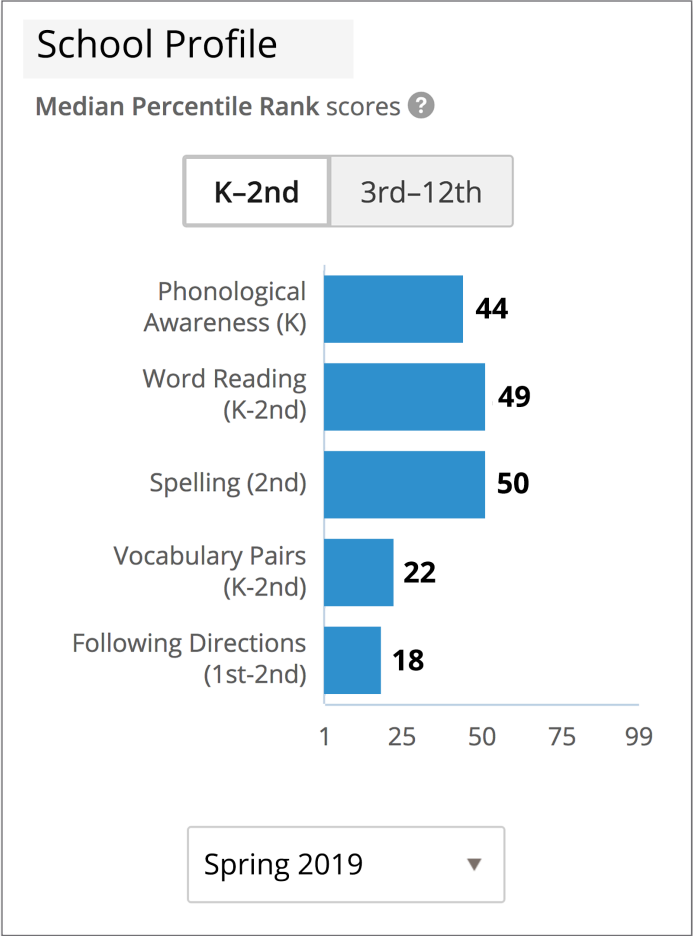
Individual students receive a percentile rank score for each assessment task. Class, school, and district reports display the median percentile rank.

Class Overview, Grade 2

Instructional Groups		
Name		Students
<div><div></div><div></div></div>	Word Recognition and Academic Language	3
<div><div></div></div>	Word Recognition	6
<div><div></div></div>	Academic Language	8
<div><div></div></div>	Enhanced Instruction	4

Based on their Profiles, RAPID identifies the instructional focus for groups of students.

Profile: School View, Grades K-2



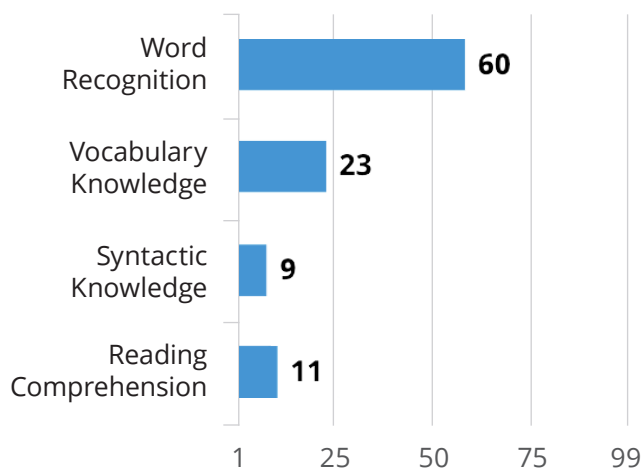
Students at this school would benefit from increased instructional focus on vocabulary and academic language in grades K-2.

 Instructional leaders can use school-, class- and district-wide profiles to assess the need for curriculum review, or additional professional development for teachers and staff to address skill gaps.

Profile: Student View, Grade 6

Student Profile

Percentile Ranks for April 11, 2019



View Assessment from April 11, 2019 ▼

This student needs additional instructional support in academic language and reading comprehension.

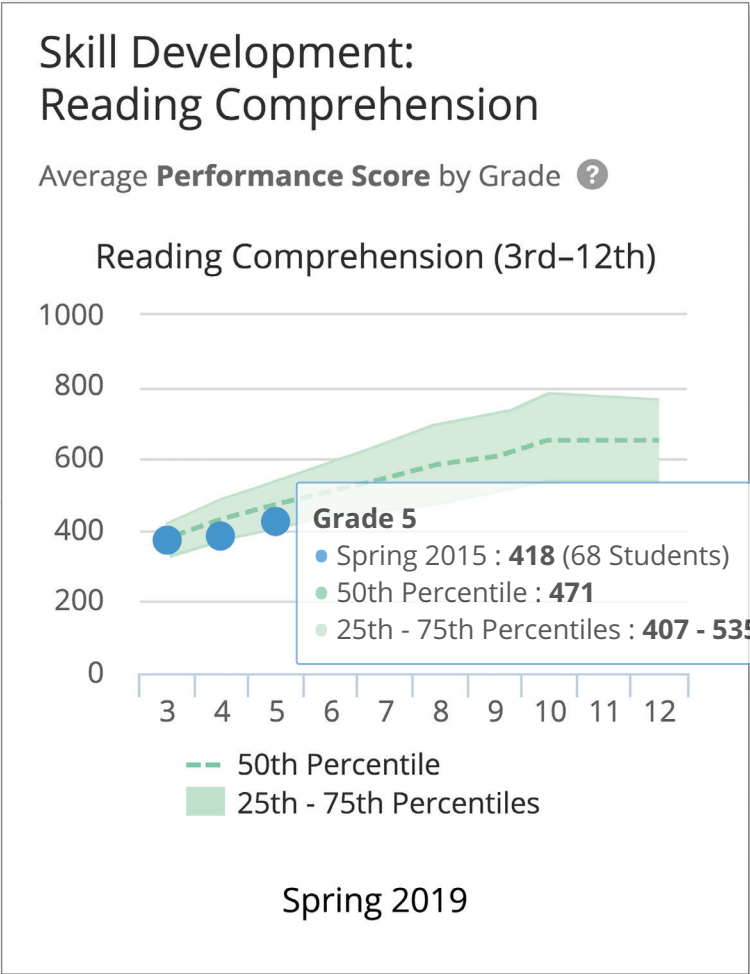


Teachers can use the student profile and Lexile® Reader Measures to differentiate instruction according to students' strengths and weaknesses in key skills, and can address class-wide skill gaps via whole-group instruction.

How have students' literacy skills developed?

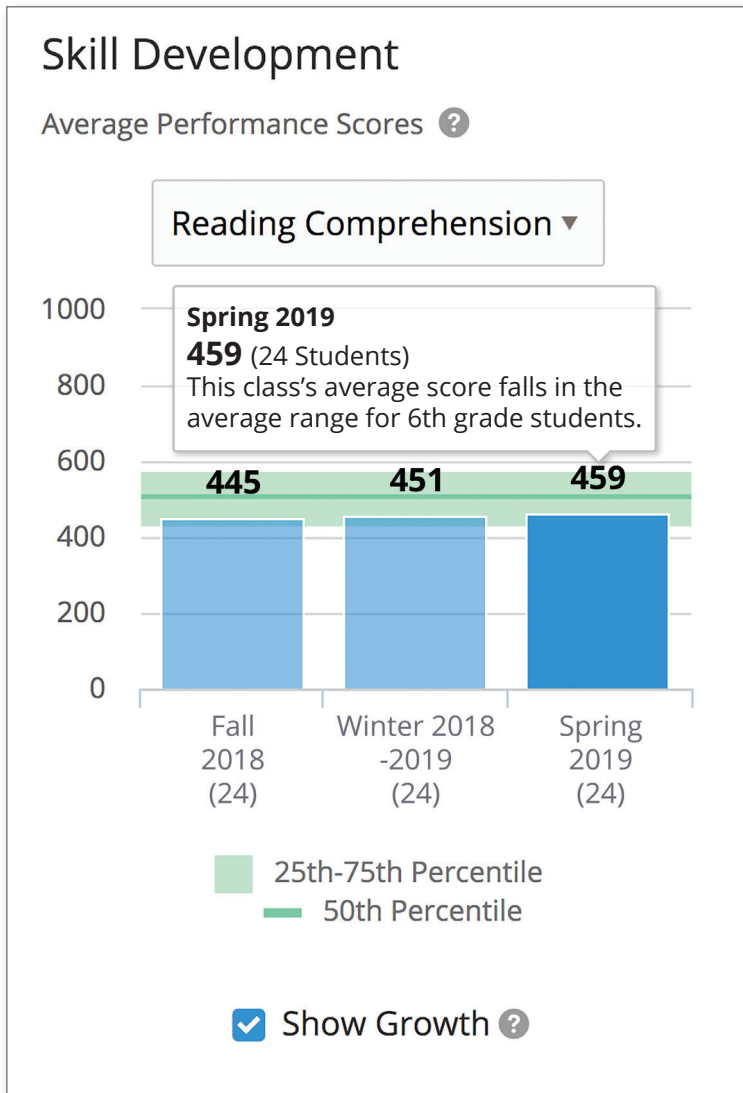
Skill Development: School View

In the **District and School Views**, the Skill Development report displays average student performance for each grade-level cohort for each skill assessed in the three key domains of Word Recognition, Academic Language, and Reading Comprehension.



Instructional leaders can identify where students are on the developmental scale in acquiring key reading skills, and use this information to track the impact of curriculum, instruction, and intervention programs across a school or district.

Skill Development: Class View



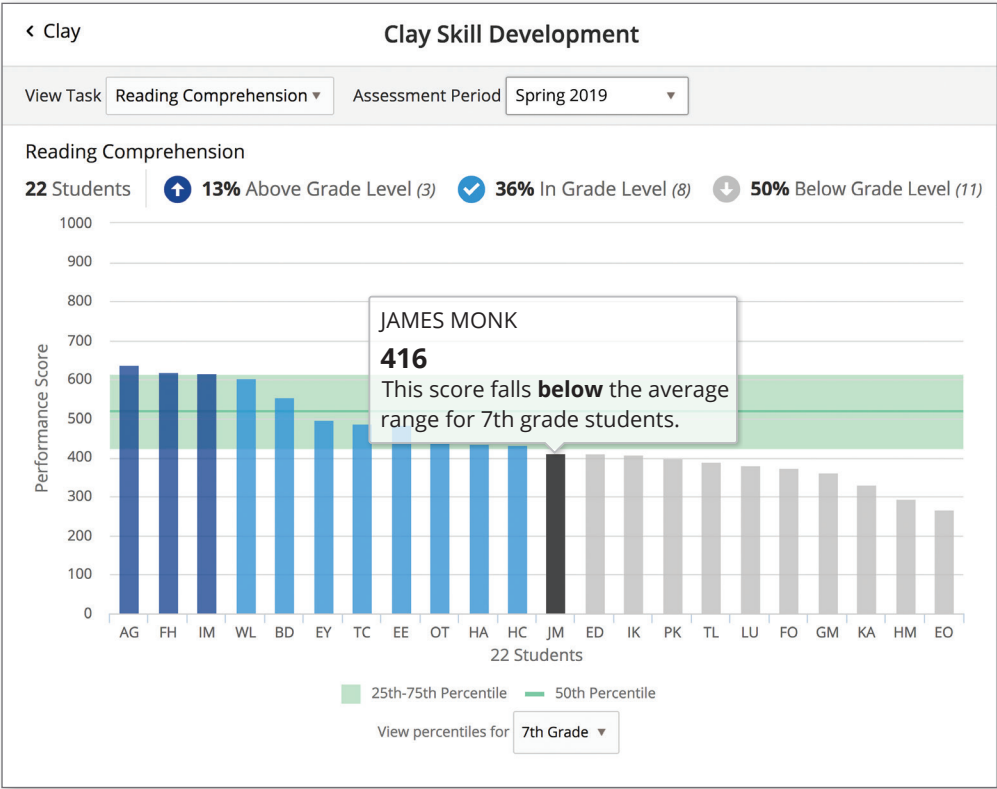
In the **Class View**, the Skill Development report displays average class performance for each skill assessed in the three key domains of Word Recognition, Academic Language, and Reading Comprehension, for each administration of RAPID.





Teachers can track whether the class has improved in key skill areas, and determine if current instruction is having the desired impact. They can also compare average class performance to that of grade-level peers.

How many students are performing on, above, and below grade level?

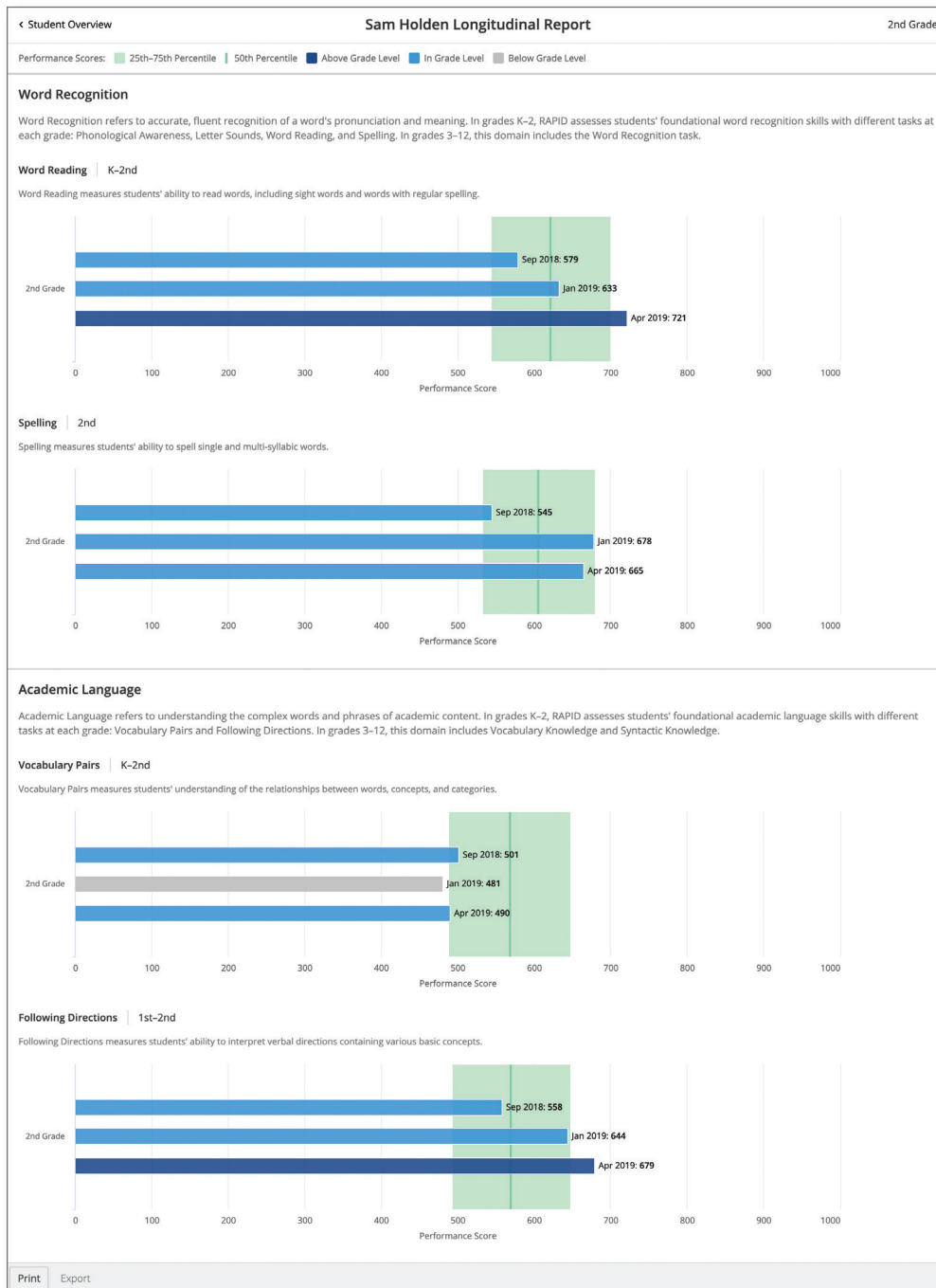
Skill Development: Class View



In the **Class View**, the Skill Development report displays the distribution of student performance for each skill assessed.

-  Instructional leaders can identify the percentage of students in need of intervention support, as well as of those who are performing above grade level.
-  Teachers can see each student's performance relative to classmates' performance and to grade-level norms.

How has a single student performed over time?

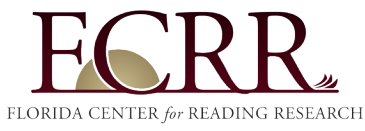


The Student Longitudinal Report displays an individual student's performance scores for all required screening tasks over time.



Teachers can monitor change in student skills within and across academic years.

Research-validated by reading experts



RAPID was developed through an ongoing partnership between Lexia Learning and the Florida Center for Reading Research (FCRR) at Florida State University.

RAPID is designed to assess the skills research has shown to be most predictive of reading success, so that busy educators can focus time and effort where they are most likely to make an impact on student achievement.

Educators choose RAPID to...

- Screen all K-12 students in the skills most predictive of end-of-year reading success
- Identify literacy instructional priorities at the district, school, class, and student level
- Discretely measure the academic language skills that are critical to overall success
- Align district and school literacy initiatives using actionable data

Learn how RAPID helps you prepare students for reading success:



www.lexialearning.com/rapid



300 Baker Avenue
Suite 320 • Concord, MA 01742
www.lexialearning.com

tel: 800-435-3942 / 978-405-6200
fax: 978-287-0062

© 2020 Lexia Learning, a Rosetta Stone Company. Lexia®, RAPID™ and other trademarks, names, and logos used herein are the property of Rosetta Stone Ltd. and/or its subsidiaries, and are registered and/or used in the United States and other countries. Additional trademarks included herein are the property of their respective owners.

MKRAPIDRPTS-0120