



# World-Class Instructional Design & Assessment (WIDA) **Alignment Overview**

Lexia® English Language Development™ aligns to the Language Expectations outlined by WIDA for grades K-6. Developed to address the need for educational equity for Emergent Bilinguals, Lexia English offers an engaging, individualized approach that helps improve students' language proficiency.

# Lexia English Program Components

## Independent Student-Driven Learning

Lexia English is an adaptive, blended learning, speaking, and listening program that supports students' English language development through academic conversations. The software is designed to help Emergent Bilingual students in grades K-6 acquire higher language proficiency levels of English. It integrates speaking, listening, and grammar, while emphasizing the language of content in Math, Science, Social Studies, General Knowledge, and Biographies.

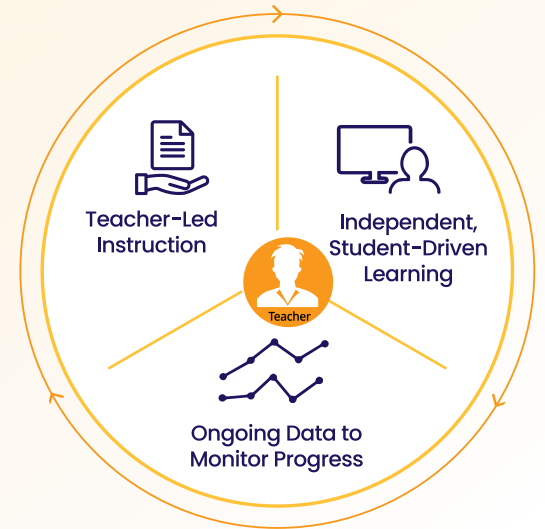
## Ongoing Progress Monitoring

Lexia's **Assessment Without Testing**<sup>®</sup> technology gathers and analyzes actionable, real-time progress monitoring data and provides educators with access to information that helps them adjust instruction to support targeted learning in the classroom.

## Teacher-led Instruction

Educators have access to instructional content to further support their students' needs. Below are the offline resources that are aligned to the WIDA ELD standards.

- **Lexia Lessons:** Automatically recommended for students based on their performance in the online activities, these scaffolded lessons for listening and speaking provide opportunities for additional practice and include writing activities.
- **Lexia Skill Builders:** These presentation lessons enrich students' oral language development by offering additional ways to engage students with content through writing, oral expression, and peer collaboration.



## Supporting Needs of Diverse Learners

Lexia English was designed with the understanding that learners possess funds of knowledge that help them become bilingual. The program integrates cultural elements in texts and images throughout to activate background knowledge and accelerate new learning. Students progress linguistically and academically at their own pace thanks to the embedded **Speech Recognition Technology** that provides immediate, guided, corrective feedback with respect to diverse accents.

## A Note About Our Characters

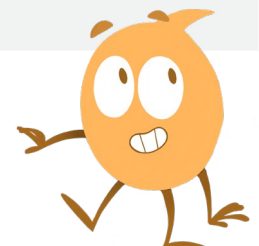
The characters in Lexia English are all multilingual and represent the top 13 languages spoken in the United States. All 17 characters have a different home language and most of them have accents like all speakers of English. They gradually reveal their backgrounds and personal stories as students progress through each level of the program.

# Lexia English & the WIDA Framework

Lexia English aligns to each component of the WIDA 2020 Framework. Lexia English received the PRIME v2 seal which shows a correlation between Lexia English’s materials and the WIDA PRIME V2 Protocol for Review of Instructional Materials for ELLs. The charts below explain how Lexia English instruction addresses each aspect of the WIDA Framework.



WIDA Big Ideas	How Lexia English Builds Student & Teacher Capacity
<b>Equity of Opportunity and Access</b>	<ul style="list-style-type: none"> <li>• Lexia English views learners’ heritage languages and cultures as an asset, which helps students become bilingual or multilingual.</li> <li>• Students engage in extensive opportunities speaking and listening practice, which helps students to expand their academic vocabulary while encouraging them to apply their learning in different subject areas.</li> </ul>
<b>Integration of Content and Language</b>	<ul style="list-style-type: none"> <li>• Lexia English instruction includes language frames that go beyond foundational sentence starters and provide learners with portable language that help make sense of—and properly use— grammatical conventions in conversation and academic discussion.</li> <li>• Students can immediately apply their learning in different subject areas, while grammar is embedded in their exchanges with the software’s 17 fellow Emergent Bilingual characters, who are subject experts in Math, Science, Social Studies, General Knowledge, and Biographies.</li> </ul>
<b>Collaboration Among Stakeholders</b>	<ul style="list-style-type: none"> <li>• Lexia English’s Educator Platform, myLexia, offers educators and administrators insights and information to help them: answer important questions about student progress, proficiency levels, and program usage; adjust instruction; and secure better learning outcomes for all students.</li> <li>• Lexia English offers students and their families a variety of resources to support learners’ achievement and ongoing learning.</li> </ul>
<b>Functional Approach to Language Development</b>	<ul style="list-style-type: none"> <li>• In Lexia English, the language functions are academic and reflect the goal of the conversation, such as to describe, explain, compare, and justify.</li> <li>• Online and offline instruction include language frames, which model language purposes and linguistic features, allowing for learners to practice linguistic skills in collaborative speaking, listening, close reading, and guided writing activities.</li> </ul>



## WIDA ELD Standards Statements

The five ELD Standards Statements provide educators with a connection between language development and academic content area learning. The statements represent the broad and ever-present language of the disciplines. There are four activities in each level of Lexia English, and each Activity focuses on one main content area of Math, Science, Social Studies, General Knowledge, and Biographies.

WIDA ELD Standards Statements	Lexia English Activity
<b>ELD Standard 1: Language for Social &amp; Instructional Purposes</b>	All activities
<b>ELD Standard 2: Language for Language Arts</b>	Activity 4
<b>ELD Standard 3: Language for Mathematics</b>	Activity 3
<b>ELD Standard 4: Language for Science</b>	Activity 1
<b>ELD Standard 5: Language for Social Studies</b>	Activity 2

## WIDA Key Language Uses

WIDA identified four Key Language Uses—narrate, inform, explain, and argue—that are used to further describe the WIDA standards. These four categories of texts share specific characteristics, such as purpose, organization, or other similar patterns of language use.

WIDA Key Language Uses	How Lexia English Aligns	
<b>Narrate</b>	<ul style="list-style-type: none"> <li>Language frames focus on the language purposes of describing, identifying, informing, explaining, and interpreting</li> <li>Texts focus on finding details, main idea, compare and contrast, inference, sequence, draw conclusions, and summary</li> </ul>	<p><b>Sample Lesson</b></p> <p><a href="#">Lexia Speaking Lesson: Interpreting with Rami using Verbs</a> (Level 19, Activity 3, Encounter 2)</p>
<b>Inform</b>	<ul style="list-style-type: none"> <li>Language frames focus on the language purposes of informing, explaining, describing, identifying, comparing, summarizing, and interpreting</li> <li>Texts focus on main idea, finding details, sequence, compare and contrast, and summary</li> </ul>	<p><b>Sample Lesson</b></p> <p>Lexia Listening Lesson: Identifying Supporting Details and Asking Questions &amp; Describing with Sasha using Nouns (Level 3, Activity 3)</p>
<b>Explain</b>	<ul style="list-style-type: none"> <li>Language frames focus on the language purposes of explaining, informing, describing, summarizing, comparing, identifying, and analyzing</li> <li>Texts focus on main idea, inference, finding details, compare and contrast, drawing conclusions, and sequence</li> </ul>	<p><b>Sample Lesson</b></p> <p><a href="#">Lexia Speaking Lesson: Explaining with Klaus using Adverbs</a> (Level 13, Activity 1, Encounter 3)</p>
<b>Argue</b>	<ul style="list-style-type: none"> <li>Language frames focus on the language purposes of persuading, justifying, evaluating, analyzing, informing, explaining, summarizing, and describing</li> <li>Texts focus on compare and contrast, draw conclusions, inference, and summary</li> </ul>	<p><b>Sample Lesson</b></p> <p><a href="#">Lexia Skill Builders: Creative Text &amp; Adverbs</a> (Level 13)</p>

## WIDA Language Expectations

Language Expectations are goals for content-driven language instruction, adding specificity to the ELD Standards Statements. They are the statements most like what educators generally find in academic content standards. An example of a Language Expectation is:

*Interpret informational texts in language arts by*

- Identifying the main idea and key details
- Referring explicitly to descriptions for themes and relationships among meanings
- Describing relationship between a series of events, ideas or concepts, or procedural steps

(ELD-LA.2-3.Inform.Interpretive)

Lexia English aligns to WIDA Language Expectations. For more detailed alignments between Lexia English and WIDA Language Expectations, click [here](#) and [here](#). (For an alignment between Lexia English and WIDA ACCESS for ELLs, click [here](#).)

## WIDA Can Do Descriptors

The Can Do Descriptors describe what learners can do with language across different content areas, at various stages of English language development. They relate to the ELD Standards Statements and are used to supplement the standards statements during instruction. An example of a Can Do Descriptor is:

*Grades 2-3: Listening-Level 1: Process recounts by*

- Showing what happens next based on familiar oral stories (e.g., by pointing or drawing)
- Drawing or providing other visual displays of people, animal, or objects in response to oral prompts

Lexia English aligns 93% to the Grades K-6 listening, speaking, and oral language Can Do descriptors.

