



**Lexia® Core5® Reading** is an adaptive blended learning program that accelerates the development of literacy skills for students of all abilities, helping them make that critical shift from learning to read to reading to learn.

**Lexia® English Language Development™** supports Emergent Bilingual students' English language acquisition through academic conversations. Founded on Lexia's adaptive blended learning model, the program integrates speaking, listening, and grammar in a variety of subject areas.

Lexia Core5 Reading specifically addresses **Michigan K-12 ELA Standards** with a primary focus on reading.



Lexia English specifically addresses the **WIDA English Language Development Standards** with a primary focus on speaking.



### How does it work?

Lexia Core5 accelerates reading achievement **for students of all abilities** through personalized, targeted, and explicit instruction in **fundamental literacy skills**.

Developed for students in grades PK-5, the program's 21 levels are organized into six strands of reading instruction, with **vocabulary** and **comprehension** present at every grade level.

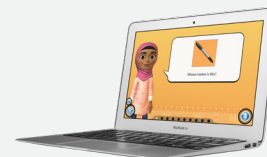
### How does it work?

Lexia English supports **Emergent Bilinguals** in building the **linguistic competence and confidence** needed for academic success, through interactions and engaging **conversations**. Developed for **Emergent Bilinguals in grades K-6**, the program's content is organized in 19 levels, featuring **speaking, listening, and grammar activities** across subject areas.

In Core5, students take a **journey around the world**. Each level has a theme such as the Amazon Rainforest, A Day in Paris, or the Egyptian Desert. Every activity in a level leverages the theme to engage students and motivate them. Children love sharing what level they're in, where they have been, and where they are going next.



Lexia English features 17 **characters** who are also bilingual or multilingual. At each level, students go through speaking, listening, and grammar exercises in science, social studies, math, and general knowledge, while the program's characters gradually reveal more about their backgrounds and heritage cultures and languages.



Core5 has a rigorous scope and sequence that supports the Michigan K-12 ELA Standards with Real-Time Progress Monitoring Data.

Lexia English's curriculum is aligned to the **WIDA English Language Development Standards** with actionable English Language Development Progress Monitoring.

v01.04.26.22



**Lexia® Michigan**

**Lexia®**

**All for Literacy™**