

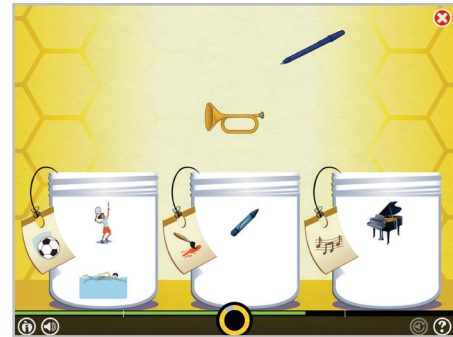
## Research-Proven Results for English Learners



Lexia® Core5® Reading for Kansas is research-proven to improve the reading performance of English Learners<sup>1</sup>. Blending student-driven learning with high-quality teacher-led instruction, Core5 helps English Learners develop strong fundamental literacy skills.

### English Learners with beginner-level language and reading skills

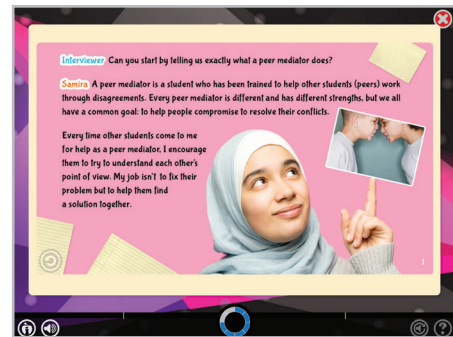
- Learn key comprehension strategies for listening and reading
- Develop phonological awareness and phonics skills that are integrated with oral language development
- Leverage picture-based activities to build concrete and abstract academic vocabulary



Picture-based activities help build academic vocabulary.

### English Learners with proficient language and reading skills

- Develop sophisticated vocabulary and strong academic language
- Read challenging narrative and expository texts to develop advanced comprehension strategies
- Learn figurative language and word concepts such as idioms, similes, and metaphors



Upper-level comprehension activities include enhanced vocabulary support.



Core5 covers the Kansas English Language Arts Standards and includes materials that promote growth.

<sup>1</sup>Schechter, R., Macaruso, P., Kazakoff, E.R., & Brooke, E. (2015). Exploration of a blended learning approach to reading instruction for low SES students in early elementary grades. *Computers in the Schools*, 32, 183–200.

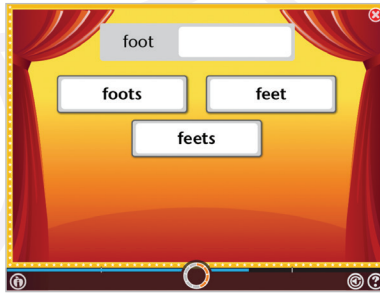
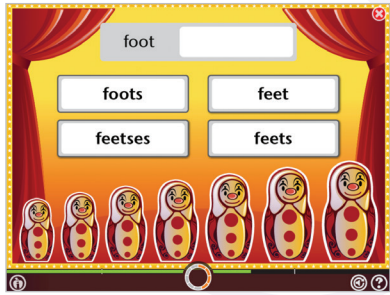


Language concepts like idioms are introduced in a fun, engaging way.

# Personalized instruction supports diverse learner needs

## Adaptive Instructional Model

Core5 provides a personalized, systematic approach to reading instruction that adapts each task based on individual student performance. The three-step instructional model adapts to provide scaffolding, immediate corrective feedback, and direct instruction as needed.



## Native Language Support

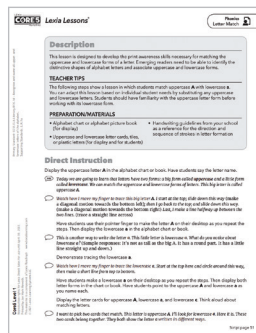
Students in Kansas can hear instructions in Spanish, Mandarin, Haitian-Creole, Arabic, Vietnamese, Portuguese, French, and Korean. School-to-home letters and resources are also available in these languages to promote family engagement.

## Resources for Kansas Teachers

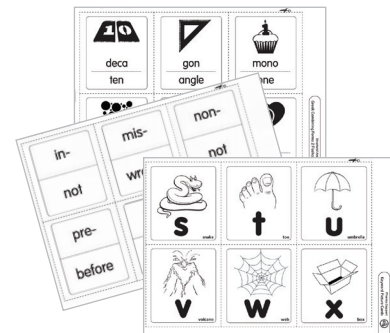
Offline Instructional Materials promote automaticity and build oral language with vertical alignment to the Kansas English Language Arts Standards.



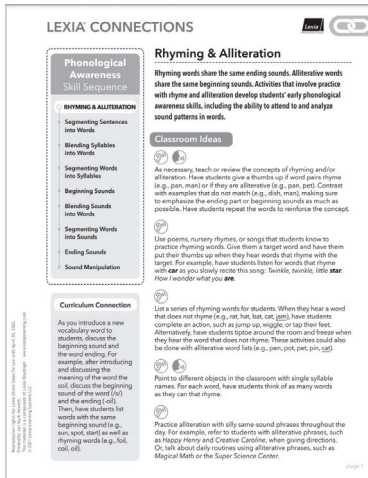
**Skill Builders** help ELs build fluency and automaticity, generalize skills, and expand expressive language. When ELs show mastery within the online component, the offline Skill Builders provide them opportunities to transfer their knowledge to a different medium and allow the educator to assess their understanding in a low-stakes manner.



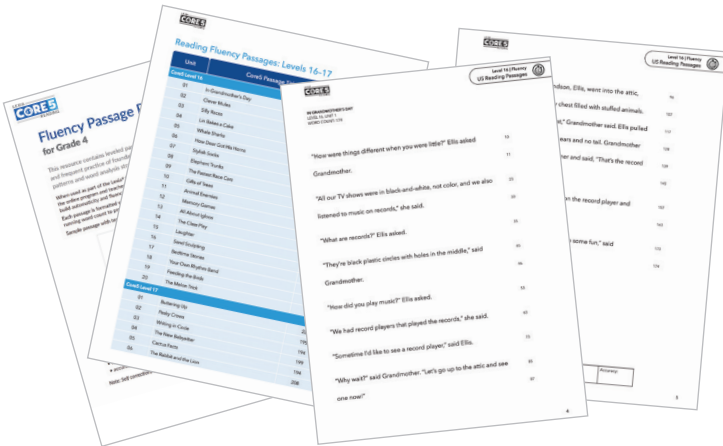
**Lexia Lessons**® support ELs identified as needing instruction, with aligned lesson objectives. Educators are provided a structured lesson that can be used in whole-group, small-group, or individual instruction. These lessons are built on the high-quality instructional model of Gradual Release, which provides scaffolded support for skill application. Multisensory activities provide opportunities for oral expression, peer collaboration, and writing. Reproducibles such as picture cards, language frames, and graphic organizers build oral language and vocabulary.



**Flash card sets** complement teacher-led instruction and are available on demand for a variety of in-class and at-home uses. Flash cards are an effective and engaging tool to introduce and strengthen vocabulary. Printable sets include: Alphabet, Keyword-Picture, Rhyming, Greek, Root, and Prefix Meanings, and Sight Word Cards.



◀ Lexia® Connections are engaging strategies and routines to structure individual, small-group, or whole-class activities targeting the essential components of reading through multisensory activities, addressing the ELD components—listening, speaking, reading, and writing. They are ideal opportunities for peer collaboration and academic discourse. English Learners are provided with many opportunities to build understanding and skills with academic language as they link reading and writing activities to content-area instruction in science, math, and social studies.



◀ Lexia Fluency Passage Packs provide opportunities for supported fluent reading practice for English Learners. Leveled passages are designed to support systematic, explicit, and frequent practice of foundational reading skills, including the use of phonics patterns and word-analysis strategies.



◀ Lexia Decodable Readers provide English Learners with additional opportunities to build and reinforce foundational reading, focusing on words with phonics patterns and high-frequency words that have been systematically taught in Lexia Core5 Reading. Each one has a Teacher Guide to support the application and generalization of phonics patterns and word-analysis strategies.