



California Educators' Guide for Mitigating Learning Loss With ESSER Funding



Lexia[®]
California

As an educator in California, what should you know about ESSER funding? Based on the needs of your parish or school, how can you best use relief funding to address accelerating learning for your students? How can Lexia® Learning's evidence-based and research-proven programs help? This guide addresses those questions and more.

The Current Realities Facing Districts and Schools in California and the Country

- Learning loss across demographics, especially for the most at-risk students
- A growing need for materials centered on social-emotional learning (SEL)
- Supporting learners as they participate in flexible learning environments and return to in-person learning
- Improving access to devices and internet
- Prioritization by California educators of students' learning engagement and motivation, as well as health, safety, and security

Our country's educational system has been deeply impacted by the COVID-19 pandemic and its ripple effects felt throughout the world.

What Are the ESSER Funds Designed to Do?

To address the impact of COVID-19 on our nation's students, Congress provided financial support for schools and parishes through the Elementary and Secondary School Emergency Relief (ESSER) Fund, which took the form of three funding rollouts that started in March 2020.



California Elementary and Secondary School Emergency Relief Funding Summary

Grant Fund	ESSER I (March 2020)	ESSER II (December 2020)	ESSER III (March 2021)
Stimulus Program	CARES Act	CRRSA	ARPA
Total ESSER Allocation	\$13.2 billion	\$54.3 billion	\$124.5 billion
LA ESSER Allocation	\$286,980,175	\$1,160,119,378	\$2,605,463,325
Minimum LEA Allocation	\$258,282,158	\$1,044,107,440	\$2,344,916,992
Available for Obligation*	9/30/2022	9/30/2023	9/30/2024

*Pre-award costs are allowable for expenses incurred from March 13, 2020.

More information about the ESSER I, II, and III funds can be found in the Fact Sheet released by the DOE.



How ESSER Funds Address the Impact on Learning Loss Due to COVID

Each round of funding legislation has [designated allowable uses](#), with the scope expanding from round to round. For instance, the original 12 allowable uses in ESSER I were expanded to 15 in ESSER II. The [DOE has advised](#) that these be expanded even further in ESSER III. The proposed 21 allowable uses include:

- Investing in resources to implement the Centers for Disease Control and Prevention (CDC) K–12 operational strategy for in-person learning to keep educators, staff, and students safe; improving ventilation; purchasing personal protective equipment (PPE); and obtaining additional space to ensure social distancing in classrooms
- Avoiding devastating layoffs and hiring additional educators to address learning loss, providing support to students and existing staff, and providing sufficient staffing to facilitate social distancing
- Funding crucial summer, after-school, and other extended learning and enrichment programs
- Hiring additional school personnel, such as nurses and custodial staff, to keep schools safe and healthy
- Providing for social distancing and safety protocols on buses
- Funding for Wi-Fi hotspots and devices for students without connectivity for remote learning and supporting educators in the effective use of technology
- Implementing strategies to meet the social, emotional, mental health, and academic needs of students hit hardest by the pandemic, including through evidence-based interventions and critical services like community schools

Ensuring Interventions Are Evidence-Based

The ARP ESSER funds come with an additional requirement: At least 20% of district funds must be used to **address learning loss through evidence-based interventions that support students' academic and social and emotional learning needs** [“and address the disproportionate impact of COVID-19 on under-represented student subgroups. The remaining ARP ESSER funds may be used for the same allowable purposes as ESSER and ESSER II.”](#) LEAs may use their funds for any of the following categories depending on local needs:

Any activity allowed under the “Every Student Succeeds Act” (ESSA) including Title I-A, Title I-C (Migrant Education), Title I-D (Neglected and Delinquent Students), Title II-A, Title III-A (English Language Learners), Title IV-A, Title IV-B 21st Century Community Learning Centers, Title V-B REAP (SRSA and RLIS), Title VI-A (Indian Education), Title VII (Impact Aid)

The scope of learning loss is unknown as of yet, but indications are worrying. As reported by [McKinsey](#), assessment provider NWEA found that U.S. students may have lost, on average, three months of learning in math and 1.5 months in reading because of shutdowns in spring 2020 alone.



As they plan for how to allocate ESSER dollars for the future, educators will be looking for tools and resources that meet the standard of evidence-based interventions to qualify for ARP ESSER funds. One unbiased source on programs that meet the standard is nonprofit [Evidence for ESSA](#).

Not many edtech providers have programs that have earned [Strong ratings at both the elementary and secondary level from Evidence for ESSA](#). The organization's analysis estimates that Lexia's programs have the largest impact on student reading outcomes, as measured by the average effect sizes.

Here are some of the reasons why state-approved Lexia® Core5® Reading and Lexia® PowerUp Literacy® solutions for California public schools are well suited for this uniquely challenging task:

- Lexia programs are **research-proven to boost learning outcomes** among different student populations.
- Lexia saves educators up to a month of instructional time with **real-time, actionable data** that takes the guesswork out of differentiating instruction.
- Lexia can bridge instruction as schools transition back to having students in class by supporting **learning in the classroom, virtually, and in hybrid models**.
- Lexia **scaffolds struggling students**, giving them the exact instruction they need, exactly when they need it.

How California Plans to Use ESSER Funding

Funds are allocated to each state in the same proportion as their Title I, Part A grants. Per the California Department of Education, funding will be used to create comprehensive plans, focus on getting back to in-person teaching and learning safely, assess and address academic needs and accelerate learning, and meet the social-emotional and mental health needs of students and educators. More information can be found [here](#).

How Does Lexia Address Systems of Intervention and Prevention?

Lexia proactively addresses a wide variety of student needs through dynamic frameworks such as Multi-Tiered Systems of Support (MTSS) and Response to Intervention (RtI). These frameworks emphasize the critical elements of screening, high-quality instructional time, progress monitoring, and data-based decision-making. By delivering effective instruction at a universal level and collecting actionable data that will address student needs, any identified gaps in skill, learning, or opportunity can be proactively addressed. However, teachers often still spend an enormous amount of time on individualizing instruction for student needs to address intensive intervention.

The pairing of high-quality instruction and continuous Assessment Without Testing® (AWT) data allows students to learn and practice skills at their own targeted place and pace, provides educators detailed insight into their students' skills, and links to specialized instructional resources.

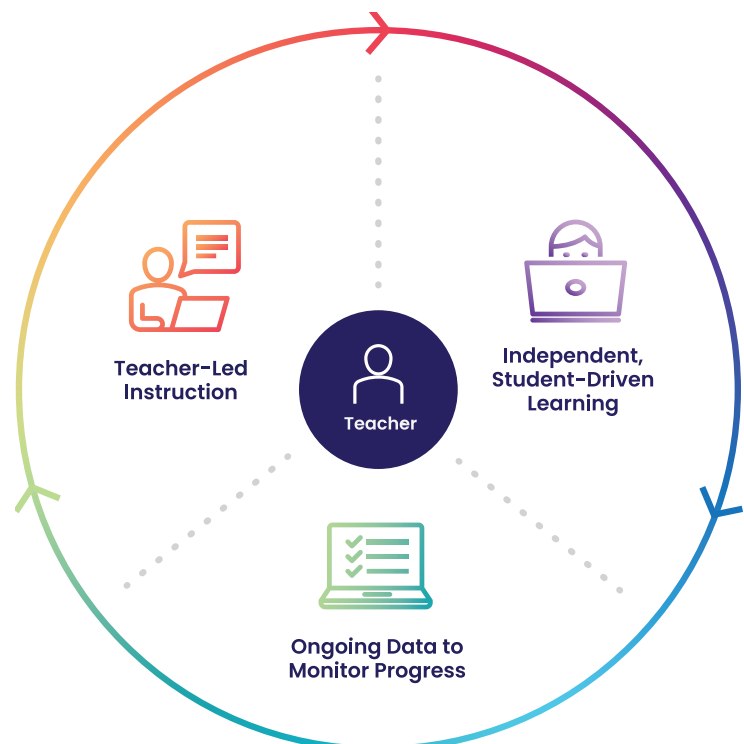


Not Just Catchup, Acceleration

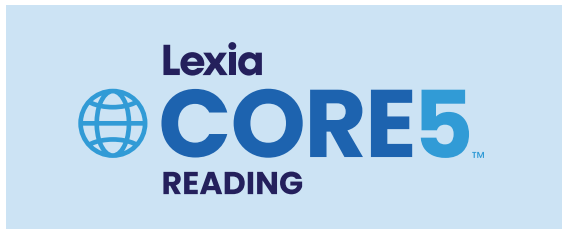
As educators are returning to the classrooms and evaluating the realities of learning loss, many are shifting their thinking from remediation to acceleration.

A feature in the [Washington Post](#) points out, “With remediation, the goal is to make up what a child missed the first time around. Some call it meeting students ‘where they are.’ The problem is students may never catch up. Accelerated learning, by contrast, seeks to make grade-level work accessible to those who are behind through a combination of intensive help and modifications.”

A well-designed Structured Literacy curriculum like Lexia’s has the flexibility to both meet students where they are and help them accelerate forward to current class level or beyond. If you’re feeling overwhelmed or unsure how you’re going to address learning loss, [talk to your Lexia literacy expert](#) to learn how you can use your ESSER funds and Lexia’s personalized literacy solutions to flexibly deliver research-proven literacy instruction in your school or district.



How Lexia Aligns to the Approved Uses of ESSER Funds



Lexia’s online literacy programs are research-proven, adaptive blended learning solutions that accelerate reading skills development and provide teachers with data-driven action plans to help differentiate instruction for each student. They provide explicit, systematic, personalized learning on critical reading instruction and deliver real-time performance data without stopping to administer a test.

Lexia is correlated to the California Common Core State Standards (CA CCSS) for Language Arts and now has 22 externally reviewed [research studies](#) that show significant growth across subgroups, including economically disadvantaged students and English Learners. These significant results were also demonstrated across both Black/African American and White/Caucasian students, and in both general education and special education. These improved learning outcomes are required for federal mandates under the [Every Student Succeeds Act](#).

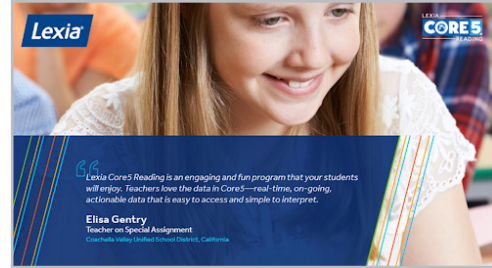
California Student Populations Served

	Lexia CORE5 READING	Lexia POWERUP LITERACY	Lexia POWERUP LITERACY
Student Population	Pre-K-5	6-8	9-12
Tier I	✓	✓	
Tier II	✓	✓	✓
Tier III	✓	✓	✓
English Learners	✓	✓	✓
Dyslexia	✓	✓	✓

Lexia’s literacy programs allow students to move quickly through the content as they demonstrate mastery, receiving scaffolded instruction only when struggling on a specific skill. This model addresses skill gaps while allowing for acceleration to make up for lost instructional time as a result of COVID-19. Lexia flexibly supports MTSS and RtI frameworks in California, including for students with dyslexia, making teacher intervention easy.



Real-time actionable data helps educators **prioritize individual students**. Lexia alerts the teacher when students struggle. While **on-target** and **advanced students work independently, the teacher can work directly with struggling students**.



Educators can **check the progress of students** working in-person or remotely and **provide administrators with a measure of progress** that is highly **aligned with** (external) standardized/state assessments.

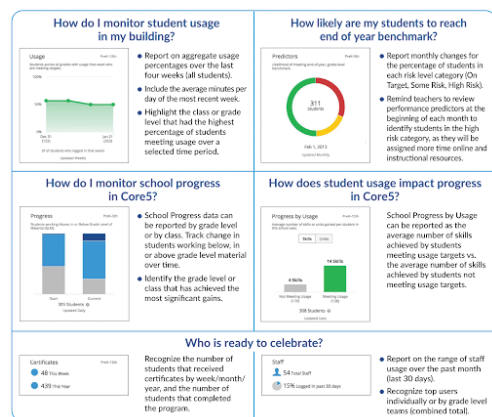


Lexia values the human element of teaching. **Teachers are extremely important in the Lexia blended learning model that combines online and offline learning**; the combination of artificial intelligence (AI) and human intelligence (HI) makes this model successful. It **seamlessly supports teachers and students** with both online and face-to-face literacy instruction and professional learning for your team regardless of educational setting.

Learning Now	ACADEMY
"I need help using Lexia products now."	"I want to learn best practices of product implementation and literacy instruction for my classroom."
3-6 minutes of just-in-time learning	2+ hours of course based curriculum
On-demand videos featured on the Resources Hub	Single Sign-On to Learning Management System (Canvas) via myLexia®
"Getting Started" and "How to" product-focused training	Advanced exploration of best practices of product implementation and literacy education
<ul style="list-style-type: none"> Guided Product Overviews Engaging Animations Interactive Informational Charts 	<ul style="list-style-type: none"> Expert Teacher Video Application Exercises Interactive Activities Knowledge Checks
	<ul style="list-style-type: none"> Personal progress monitoring Digital Badges and Certificates Transcripts

Lexia's proprietary **Assessment Without Testing** provides **daily/weekly actionable, norm-referenced and NWEA MAP-aligned data without administering a test**.

Data is captured in real time and is immediately available to the teacher to inform instruction and impact progress.



Because Lexia is an easy lift for teachers with comprehensive programs that offer accelerated blended learning approaches and resources, programs can be up and running quickly and efficiently. All students—especially those who are most in need—are receiving targeted instruction meeting their needs and teachers are not having to search out supplemental curriculum.

Essential Elements to Scale Positive Student Outcomes



How Lexia's research-proven programs can help:

ACCELERATE LEARNING

Provide personalized and explicit instruction, scaffolding students as they struggle and advancing them as they master skills.

SOCIAL INTERACTION SUPPORT

Recommend offline resources for teacher-led instruction and materials for small-group and individual practice.

EMPOWER EDUCATORS

Support professional growth with meaningful learning opportunities—anytime, anywhere.



FLEXIBILITY

An adaptive blended learning framework supports learning from the classroom to the cloud and back again—seamlessly.

EFFICACY

Unparalleled efficacy research with more than 20 externally reviewed research studies and STRONG ratings on Evidence for ESSA.

ASSESSMENT CAPABILITIES

Assessment Without Testing identifies skill gaps, predicts performance, prescribes instructional intensity, and provides next-step action plans.

Lexia's portfolio is grounded in the principles of the Science of Reading

Curriculum



PreK-5



K-6



6-12

Professional Learning



PreK-5

EMBEDDED ASSESSMENT

Assessment Without Testing



Actionable data for educators and administrators



4-8



Customer Success support at every step of the journey



Which Federal Funds Can Support Lexia Programs?



Funding Source			
Title I, Section A	✓	✓	✓
Title II	✓	✓	✓
Title III	✓	✓	✓
Title IV	✓	✓	✓
IDEA	✓	✓	✓
ESSER I, II, III	✓	✓	✓





**Contact the Lexia®
California team
to learn more.**



**Lexia®
California** All for Literacy

Lexia®

Lexia Learning, a Cambium Learning® Group company, is the Structured Literacy expert. For more than 30 years, the company has focused solely on literacy, and today provides a full spectrum of solutions for both students and teachers. With robust offerings for differentiated instruction, personalized learning, assessment, and professional learning, Lexia helps more learners read, write, and speak with confidence.

    [lexialearning.com](https://www.lexialearning.com)

© 2023 Lexia Learning LLC, a Cambium Learning® Group company. Lexia®, Core5®, and other trademarks, names, and logos used herein are the property of Lexia Learning and/or its subsidiaries, and are registered and/or used in the United States and other countries. Additional trademarks included herein are the property of their respective owners.