

GRADES K-6

Lexia[®]
ALL FOR LITERACY™



Say Hello to Lexia[®] English in Washington



Lexia[®] English Language Development[®] is an adaptive blended learning speaking and listening program that supports students' English language development through academic conversations.

Lexia
 **ENGLISH**[™]
LANGUAGE DEVELOPMENT



Lexia
Washington

Empowering Emergent Bilinguals to **Thrive**



Equitable Learning for All Emergent Bilinguals

Lexia English is designed to support Emergent Bilingual students, also known as English Language Learners, in acquiring higher language proficiency levels of English. Founded on the leading-edge expertise of Lexia®, the program blends language learning with subject knowledge to improve academic achievement. From Newcomers to Long-Term English Learners, Lexia English meets all students where they are and targets oral language and grammar skills at a level appropriate for each student's proficiency.

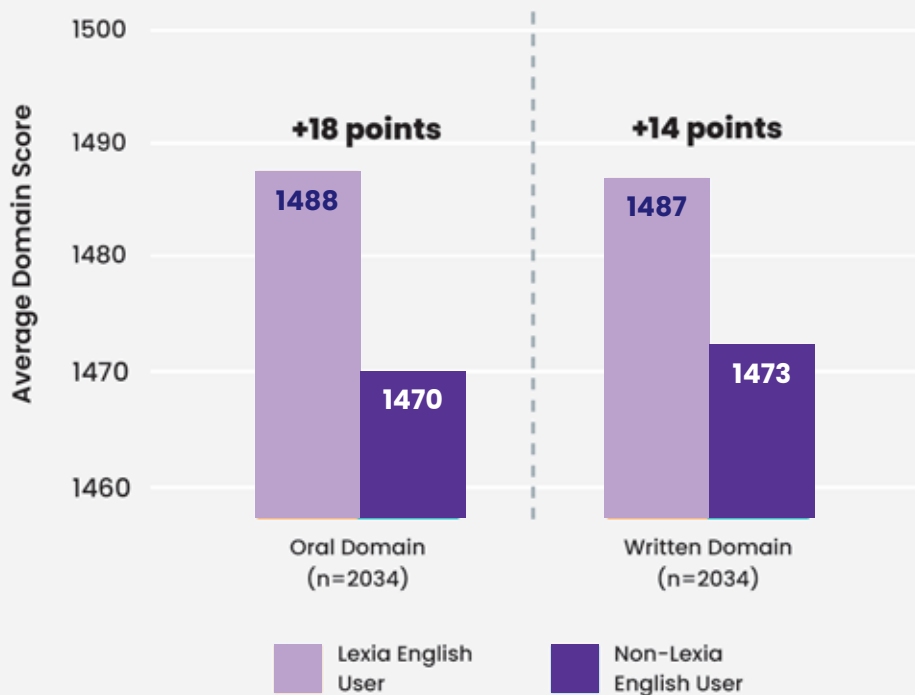
Lexia English supports and enhances:

- ✓ Educational equity
- ✓ A growth mindset
- ✓ Language proficiency
- ✓ Academic achievement
- ✓ School-to-home connection
- ✓ Individualized linguistic and academic progress



Research-Based and Research-Proven

Lexia English is built upon research that supports best practices for language learning and development, and it's proven to work. Efficacy studies demonstrate that providing targeted oral language and grammar instruction through Lexia English benefits the acquisition of broader literacy skills. These studies^{1,2} fall under the ESSA tiers of "Promising" and "Moderate" for providing evidence of program effectiveness.



Source: Impact of Using Lexia English on the California English Language Proficiency Assessment¹

Lexia English Users Perform Better Across All Language Domains

The efficacy studies conducted to examine Lexia English's effectiveness show there's a clear connection between using the program and achieving gains in both the oral and written domains, benefiting students in speaking, listening, reading, and writing.^{1,2}



Designed to Advance English Language Proficiency

Auto-Placement

Determines correct entry point into the program

Assesses both receptive and productive language skills

Places students based on knowledge and use of English

Embedded Assessment

Assessment Without Testing® ensures ongoing progress monitoring

Auto-Placement determines optimal starting level

Presentations of Knowledge allow students to demonstrate learnings

Fully Aligns with Language Proficiency Standards

WIDA

Rigorous academic content

Supports language acquisition for students at all proficiency bands

Culturally Responsive

Languages and backgrounds are viewed as assets

In-program accent variation supports and affirms learners

17 bilingual characters keep students engaged

Flexible Implementation

Fits flexibly into a variety of programs: dual-language, sheltered instruction, designated English language development (ELD), integrated ELD, push-in, pull-out, etc.

School-to-Home Connection and Student Success Celebration

Parent reports and translated resources

Home-use letters and videos

Achievement certificates

Goal-setting and progress-tracking assets

Integrating speaking, listening, and grammar skills into academic subjects



Math



Science



Social Studies



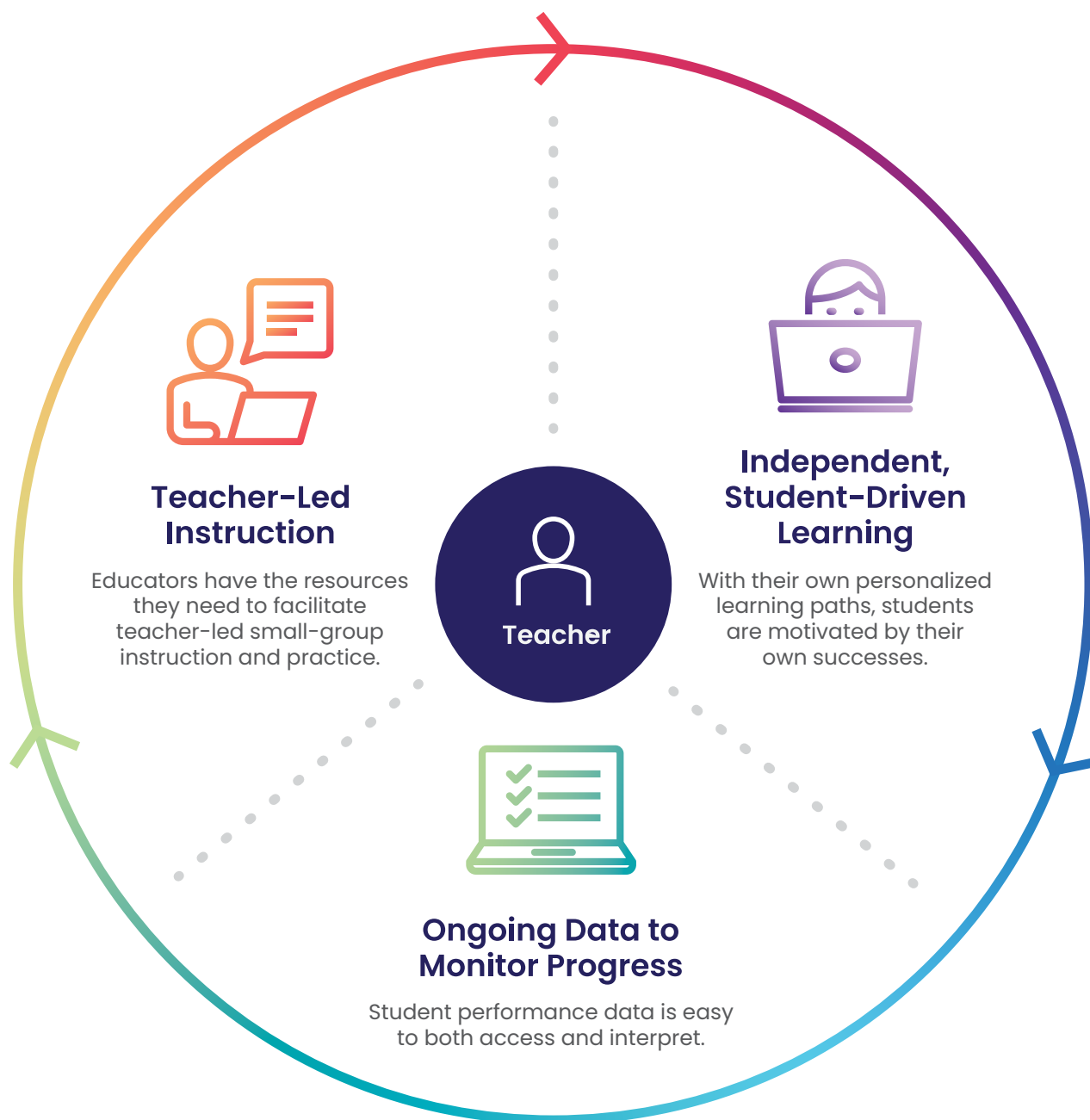
General Knowledge



Biographies

Adaptive Blended Learning Model

The adaptive blended learning model has proven to be an effective way to support Emergent Bilinguals by combining online and teacher-led offline instruction to accelerate English language learning. In Lexia English, personalized learning is targeted and time-efficient, with the teacher at the core of every step, while students are motivated by their own successes.



Equitable Speech Recognition Builds Linguistic Confidence

In Lexia English, students progress linguistically and academically at their own pace, thanks to the program's embedded Speech Recognition Technology. It provides immediate, guided, corrective feedback against the backdrop of an encouraging and nonjudgmental environment with respect for heritage, culture, and language.

Eliminating Accent Biases

The Speech Recognition Technology is cross-trained to listen for and accept phoneme blends—namely, diverse accents. These speech capabilities were built to understand words as they are spoken by children who regularly use English in addition to one or more other languages. The program's adaptive blended learning approach ensures a pluralistic teaching method, enabling students to learn the English language while being exposed to a wide range of accents through various interactions and formats.

Embracing an **asset-model mindset**, Lexia English helps instill confidence in Emergent Bilingual learners, **creating a more inclusive classroom for all.**



Supporting Students and Educators for **Improved Outcomes**



Built-In Supports for Unparalleled Language Instruction

Culturally and ethnically diverse characters engage and encourage students throughout their learning journeys, while interactive academic conversations empower them to build the linguistic competence and confidence needed for academic success.



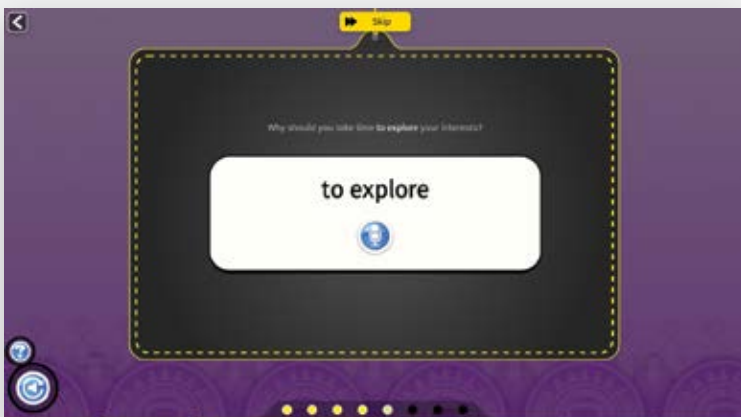
Auto-Placement Support

Lydia, the program's Auto-Placement coach, welcomes new students and demonstrates how to answer practice questions. Lydia also introduces the various on-screen buttons and controls to the students.



Audible Support With a Familiar Face

For various activity types in the program, Lydia shows users how to successfully access the built-in audible support for on-screen text.



Scaffolded Instruction

Branching to instruction and scaffolded support target specific skills and areas of improvement.



Corrective Feedback

Learners receive feedback about the accuracy of their utterance and are offered multiple opportunities to practice in a safe environment.

Embedded Assessment for Ongoing Progress Monitoring

The program's patented Assessment Without Testing technology gathers and analyzes actionable, real-time progress-monitoring data and recommends Lexia Lessons® for teacher-facilitated peer-to-peer speaking and listening practice. All reports can be accessed through our easy-to-use myLexia® Educator Platform.

Access Actionable Data, Anytime, Anywhere

At all times, educators have access to information that helps them adjust instruction and secure better learning outcomes for all—including insight into student strengths and skills, real-time actionable data, and resources and tools to support targeted learning in the classroom. Removing the guesswork from planning and personalizing instruction makes grouping students together for targeted instruction easy.

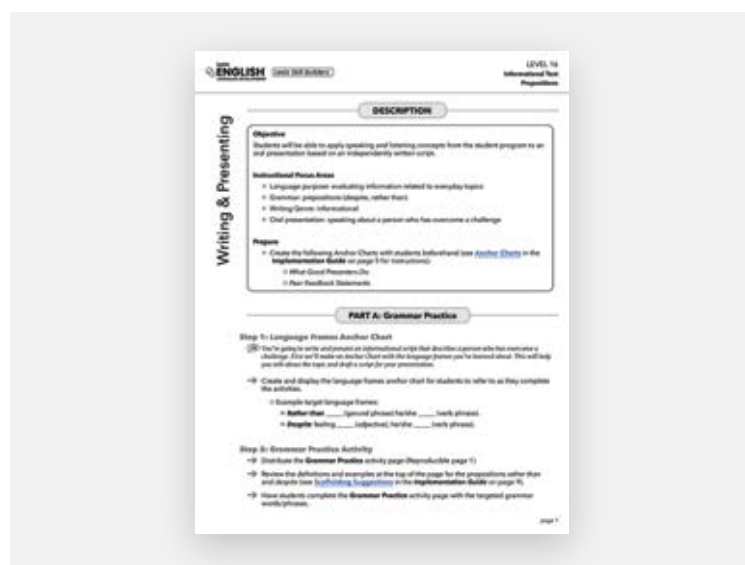
Student Name ↑	Grade ↓	Proficiency Bands Ⓞ						Current Band ↓	Program Level ↓	This Week	
		Entering	Emerging	Developing	Expanding	Bridging	Reaching			Minutes ↓	Units ↓
Anand, Swathi	3rd	●						Entering 3-6	L2	0	0
Bakshi, Ram	1st		●					Developing K-2	L5	31	5
Gonzalez, Maria	5th			●			●	Reaching 3-6	L19	57	14
Khan, Najneen	2nd		●					Developing K-2	L6	59	14
Kovalenka, Katherine	1st	●						Emerging K-2	L3	105	15
Morales, Camila	5th				●			Bridging 3-6	L17	60	14
Moreno, Yolanda	3rd	●						Emerging 3-6	L5	103	15

Activity Ⓞ	Activity Accuracy Ⓞ			Encounter	Units Completed	Minutes	Presentation Score Ⓞ	Activity Lesson Ⓞ	Last Used
	Speaking	Listening	Grammar						
Describing with Farah using Nouns	66%	61%	77%	1: his / hers	7 of 7	60	50%	[Link]	Mar 26, 2020
				2: ours / theirs	7 of 7	46	66%		
				3: mine / yours	7 of 7	54	50%		
Explaining with Juan using Verbs	68%	69%	82%	1: is going to	7 of 7	56	83%	[Link]	Apr 14, 2020
				2: will	7 of 7	48	66%		
				3: is going to / will					

Resources for teacher-led instruction are one click away

Empowering Teachers to Track Student Growth

Lexia English offers additional resources to target individual needs, supporting and extending lessons and providing more opportunities for practice.



Teacher-Led Lexia Lessons®

Based on student performance in the online program, Lexia English recommends specific teacher-led lessons, easily accessible in PDF and Google Slides formats. These lessons reinforce students' online learnings, provide opportunities for additional practice, and include writing activities that focus on the same language frames and grammatical conventions learners are being taught in the program.

Lexia Skill Builders®

The program's engaging instructional resources, Lexia Skill Builders, enrich students' oral language development by offering them additional ways to engage with content from the student application through writing, oral expression, and peer collaboration.

“

So often, teacher guides are written by academics who have no actual understanding of what goes on in a classroom. Lexia English lessons are realistic. They can easily be taught in a 30-minute time period, and they follow the same basic pattern for kids to learn the routine.

— ESL Teacher
TK–6, California

Standards-Aligned Curriculum Boosts Language Acquisition

Through a systematic Scope and Sequence that maps the program’s content to **WIDA ELD Standards in Washington**, Lexia English creates personalized learning paths for all students, adopting an adaptive blended learning approach while offering interactive, scaffolded activities, enabling language acquisition at all proficiency bands.



Language Proficiency Band		Grade Span	Program Levels	Speaking Language Purpose	Grammar Skills	Grammar Subskills	Listening Skills
Developing	K-2	Levels 5-6	Describing Explaining Informing	Prepositions Nouns Verbs Adverbs	Object pronouns Subordinating and coordinating conjunctions Auxiliary verbs Compound prepositions and prepositions of position Adverbs of time Irregular verbs Modal verbs Reflexive pronouns	Identifying supporting details Identifying the main idea Summarizing Inferencing Sequencing	
	3-6	Levels 10-12	Comparing Explaining Summarizing Informing Evaluating Describing Analyzing	Adverbs Prepositions Conjunctions Verbs	Conjunctive adverbs Prepositions of time Subordinating conjunctions and passive voice Present perfect Modal verbs Coordinating conjunctions Adverbs of stance Prepositions Adverbs of degree Conjunctions	Comparing and contrasting Identifying the main idea Inferencing Drawing conclusions Identifying supporting details	
Expanding	K-2	Levels 7-8	Comparing Informing Evaluating Explaining Analyzing	Adjectives Verbs	Comparative and superlative adjectives Irregular verbs Auxiliary verbs Gerunds Past continuous Comparative adjectives Modal verbs	Inferencing Sequencing Identifying supporting details Identifying the main idea Comparing and contrasting	
	3-6	Levels 13-15	Explaining Comparing Justifying Summarizing Describing Informing Analyzing	Adverbs Nouns Conjunctions Verbs Adjectives	Conjunctive adverbs Subordinating conjunctions Relative pronouns Future in the past Comparative and superlative adjectives Present perfect continuous Modal verbs Conditional sentences Quantifiers Past perfect simple	Identifying supporting details Summarizing Drawing conclusions Sequencing Inferencing Comparing and contrasting	

Meeting Learners' Needs Flexibly

Lexia English addresses a range of needs, meeting students where they are and enabling educators to deliver targeted instruction that works with their program and their environment.



Student-Driven Learning

Students learn and practice in the online program at school or at home using purposeful repetition, made possible through the program's Speech Recognition Technology.

Small-Group Instruction and Collaborative Practice

Educators deliver targeted instruction with Lexia Lessons. Lexia Skill Builders are also used for individual practice, paired and small-group activities, practice activities for both written and oral delivery, teacher-guided instructional elements, and whole-class participation.



Classroom Center Rotations



Summer School



At-Home / Remote Learning



Before and After School



Dual Language



Sheltered Instruction



Push-In



Pull-Out



Designated and Integrated ELD



Alternative Implementations

Personalized and Scalable Partnerships

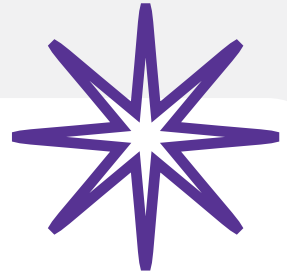
From eLearning resources to on-site services, Lexia Success Partnerships help you make the most of our solutions.



Why Success Partnerships?

Lexia Success Partnerships combine the power of our solutions with the expertise of our dedicated customer success managers. Our language and literacy experts collaborate with your leadership team to set goals that align with your instructional and staff needs, then partner with you to develop and monitor a customized implementation plan designed to achieve the outcomes you need for both students and educators.





Personalized

Every student, class, school, and district is unique. Lexia customizes each partnership so educators and administrators feel confident all aspects of their professional learning goals are accounted for and modified as needed.



Engaging

Lexia Success Partnerships create an environment of engagement, participation, and support. Every interaction is thoughtfully designed to encourage active learning.



Effective

Grounded in research best practices, Lexia Success Partnerships deliver the student outcomes educators expect and demand across classes, schools, and districts.



Relevant

Lexia focuses on the most meaningful components of professional learning to seamlessly support educators and administrators in their unique learning environments, whether in school or in a remote learning plan.

Lexia English is different.

Find out how.



Contact the **Lexia Washington team** to learn more.



“

I would recommend Lexia English to other educators because it provides a systematic approach to learning English as a second language in an interactive and academically rigorous way. Additionally, the Educator Platform allows me to collect data to make instructional decisions to meet my English learners' diverse needs.

— **Esmeralda Hernández**

Bilingual/ESL Specialist, Marilyn J. Miller Elementary School, Forth Worth, Texas

“

I've never seen a program that emphasizes speaking as much—the way that we speak and the way that we use language to respond. It really makes Lexia English different.

— **Yadhira Rojas**

Teacher on Special Assignment, Laguna Beach Unified School District, California

RESOURCES

1. Lexia Learning. (2021). Impact of using Lexia English on the California English Language Proficiency Assessment. Retrieved 10/19/22 from <https://www.lexialearning.com/resources/research/research-brief-impact-of-using-lexia-english-on-the-california-english-language-proficiency-assessment>
2. Lexia Learning. (2021). Research brief: impact of using Lexia English in Arizona. Retrieved 10/19/22 from <https://lexialearning.com/resources/research/impact-of-using-lexia-english-in-arizona>

Lexia®, a Cambium Learning Group company, is a leader in science of reading-based solutions. For 40 years, the company has focused on pre-K–12 literacy and today provides solutions for every student and educator. With a complete offering of professional learning, curriculum, and embedded assessment, Lexia helps more learners read, write, and speak with confidence. For more information, visit lexialearning.com.

©2024 Lexia, a Cambium Learning Group company. Lexia®, Lexia® English Language Development®, and other trademarks, names, and logos used herein are the property of Lexia and/or its subsidiaries, and are registered and/or used in the United States and other countries. Additional trademarks included herein are the property of their respective owners. All rights reserved.