



Lexia
POWERUP
LITERACY



California Literacy Acceleration
for Grades 6–12



Lexia
California

Why Lexia?

Founded through a research grant nearly 40 years ago, Lexia® stands as one of the most rigorously researched, independently evaluated, and respected reading companies in the world. Key elements that make Lexia unique include:

- Research and results
- Adaptive Blended Learning (ABL) model
- Patented Assessment Without Testing® (AWT)
- Focus on academic language
- Personalized and scalable implementation partnerships

Why PowerUp?

Lexia® PowerUp Literacy® accelerates literacy gains for students in grades 6–12 who are at risk of not meeting College- and Career-Ready Standards. Key advantages that make PowerUp unique include:

- Research-proven to be up to five times as effective as the average middle school reading intervention
- Simultaneously addresses gaps in fundamental literacy skills while building higher-order analytical skills to accelerate learning across a broad range of students
- Motivates adolescent learners to work toward grade-level literacy standards
- True personalization through individualized learning pathways, adaptive instruction, and data-driven action plans leads to faster literacy gains
- Saves educators time by providing progress-monitoring data and instructional resources tied to student performance without having to stop to administer a test





Research and Results Matter

While many reading programs may be described as research-based, Lexia programs are research-proven to improve learning outcomes. Our products are evaluated using rigorous scientific methods and have been found effective with a variety of populations. **Lexia's portfolio currently has more than 20 studies that have been published in independent, peer-reviewed journals and meet the standards of evidence required under the Every Student Succeeds Act (ESSA).**



ESSA Levels of Evidence

PowerUp has been awarded a Strong rating by Evidence for ESSA. PowerUp's efficacy has been demonstrated through numerous rigorous research studies aligned to ESSA criteria.

Equity for All

PowerUp was found to benefit all sub-populations equally. Black/African American and White/Caucasian students achieved similar gains, as did English Learners and non-English Learners, and general and special education students.

POWERUP IS UP TO 5X

as effective as the average middle school reading intervention program.

40+
**POINTS
HIGHER**

Success on End-of-Year Assessments

Students who used PowerUp achieved strong outcomes on end-of-year literacy assessments:

- PowerUp students scored more than **40 points higher** than non-users on STAR Reading®
- 99% of students who completed the PowerUp program met the “proficient” level on NWEA MAP®

3
**GRADE LEVELS
OF SKILLS**

Impressive Skill Gains Close the Gap

63% of students using PowerUp consistently covered **three grade levels of skills** in a single school year.

**THREE
TIMES
MORE
LIKELY**

Advancing Growth for At-Risk Readers

Struggling readers who made it to the final levels of PowerUp were **three times more likely** than those who didn't to be proficient on their end-of-year literacy assessment.



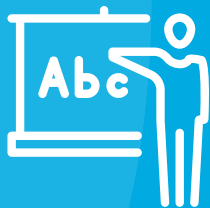
Based on the Simple View of Reading

The research-proven Simple View of Reading states that reading success is dependent on both word recognition and language comprehension. If a student does not have adequate underlying skills in both of these areas, reading success is compromised. Struggling adolescent readers have such varied skill profiles that what works for one student may not be best for another. For this reason, PowerUp is split into three domains: **Word Study**, **Grammar**, and **Comprehension**.

Word Study

Students develop accuracy and automaticity with decoding skills so they can shift their cognitive resources to deriving meaning from what they need.

- Phonemic Awareness
- Phonological Awareness
- Phonics
- Structural Analysis
- Decoding
- Spelling
- Fluency
- Morphology



Grammar

Students learn how parts of speech function in sentences and how parts of sentences convey meaning to improve both reading comprehension and written composition.

- Parts of Speech
- Parts of Sentences
- Capitalization
- Punctuation
- Text Structure



Comprehension

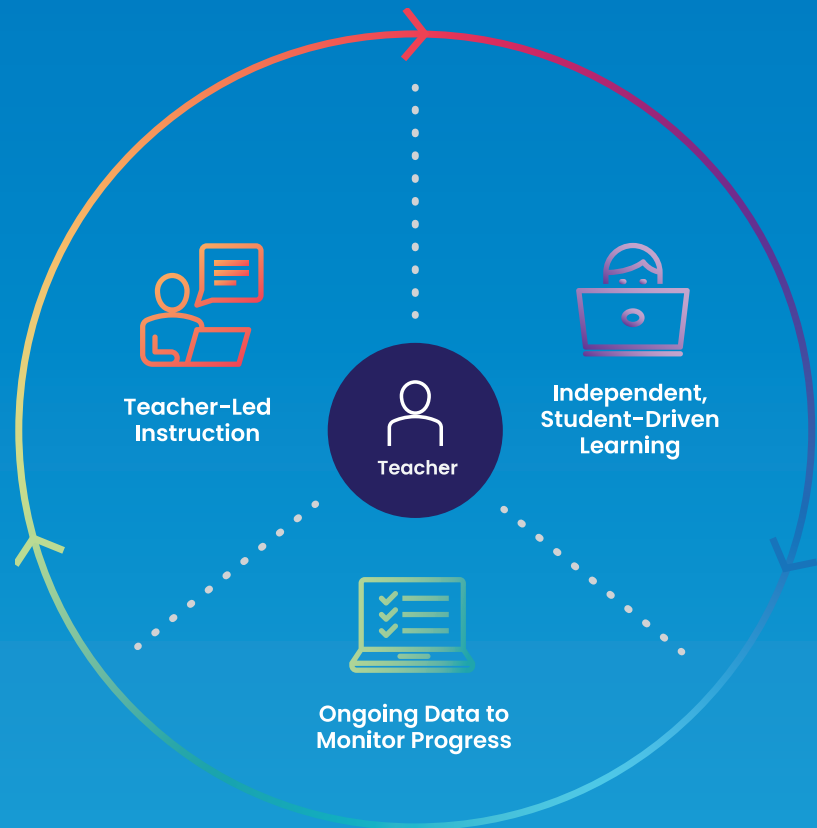
Students develop skills and strategies needed for higher-order text analysis using increasingly complex original and authentic texts that are appealing and relevant to adolescent learners.

- Text Elements
- Author's Craft
- Higher-Order Thinking
- Literary Vocabulary
- Analysis and Evaluation of Two Sources



Adaptive Blended Learning Model

- Students are motivated by their own success as they follow personalized learning paths
- Performance data is easy to access and simple to interpret
- Program resources support teacher-led instruction and independent student practice



Unparalleled Personalization Accelerates Learning

With 180 unique placement combinations, each student begins their journey in PowerUp based on their individual strengths and needs. Adaptive instruction differentiates learning as students progress through the three strands of PowerUp at their own pace.



Unrivaled Depth and Breadth of Content

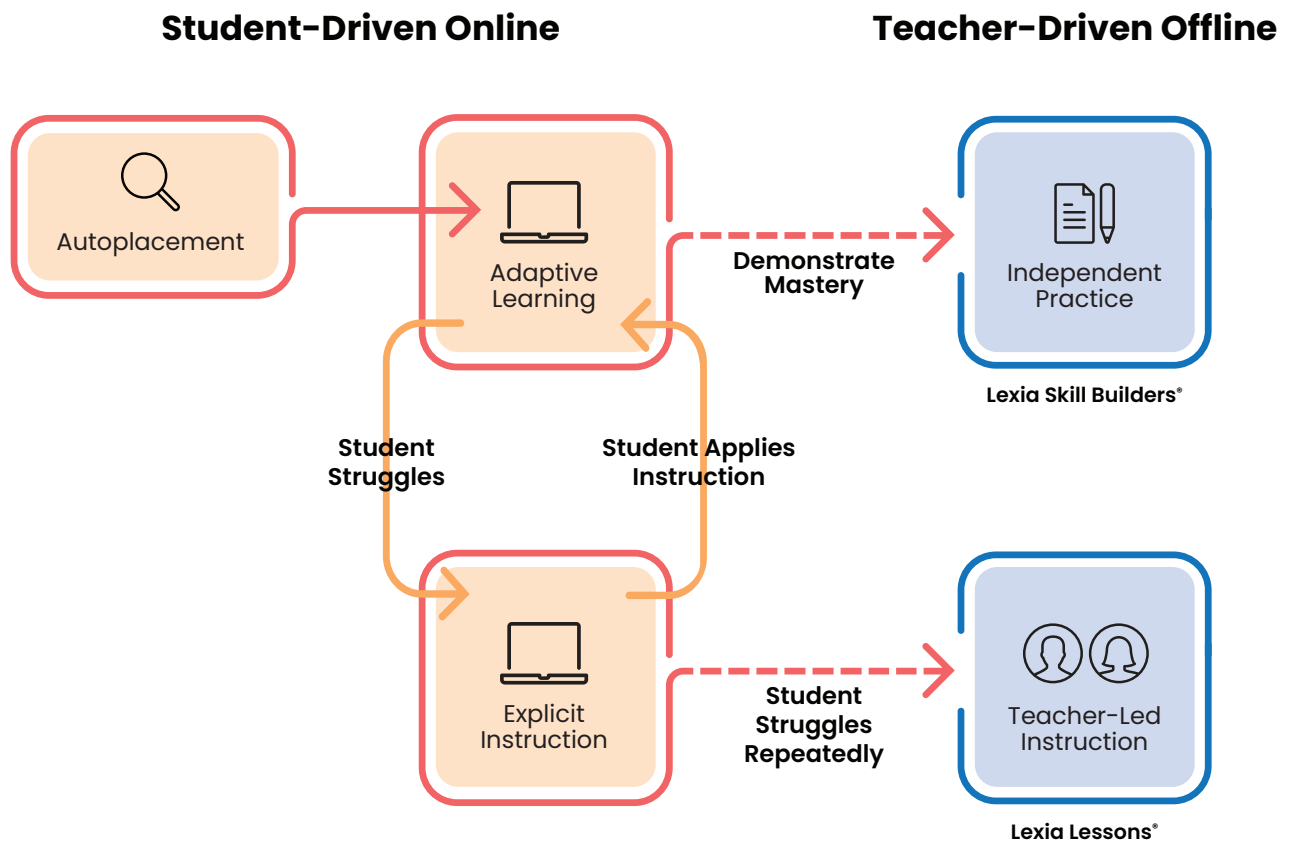
PowerUp covers a wide range of skills, from foundational reading skills typically covered in early elementary school to more advanced comprehension and analytical skills taught in early high school, enabling educators to support the range and diverse needs of struggling readers in **ONE program**.

Time-Efficient

PowerUp's time-efficient, adaptive instructional model bridges skill gaps while respecting students' time.

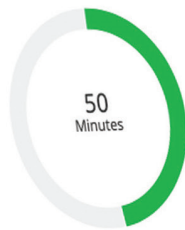
To progress in each domain, students must demonstrate proficiency. When a student struggles with a particular skill, the program provides scaffolded support through engaging videos or explicit instructional activities.

Students who demonstrate mastery can quickly move through units and onto more advanced skills.



This Week

Needs 55 minutes



Target: 105 minutes | Last Used: Jan 30, 2020

Usage and Progress

	Usage	Units
Last Week	70m	16
Last Four Weeks	6h 17m	68
This Year	9h 0m	99

Action Plan

USAGE THIS WEEK

Needs 55 minutes
Actual: 50 | Target: 105

LESSONS

Student does not currently have any Lessons.

SKILL BUILDERS

Grammar: Simple Sentences
Available Jan 15, 2020
Delivered Jan 15, 2020

RAPID Assessment

Completed Sep 22, 2019

PowerUp Progress

Strand	Foundational Levels						Intermediate Levels						Advanced Levels	
	1	2	3	4	5	6	7	8	9	10	11	12	13	14
Word Study														
Grammar					1									
Comprehension														

Auto/Manual Placement ● Completed Level ■ Current School Year % Percent Complete Current Level

Usage by Strand

	Minutes	Units
LAST WEEK		
Word Study	29	5
Grammar	31	11
Comprehension	0	0
Other	10	

Current Activities

Word Study	33% complete (on Unit 3 of 6)
Sentence Completion	
High Accuracy	
Grammar	42% complete
Parts of Speech	

Assessment Without Testing

Lexia's patented Assessment Without Testing (AWT) technology provides teachers and administrators real-time, progress-monitoring data without stopping instruction to give a test, **saving teachers up to a MONTH of instructional time** by:

- Identifying student risk levels
- Prescribing instructional intensity
- Providing daily, weekly, and monthly progress-monitoring data
- Presenting action plans to provide "next steps" for instruction

Empowering Teachers

Based on student performance online, the myLexia® educator platform automatically recommends lessons for direct, teacher-led instruction and activities for independent, student-led, and peer practice. With instructional routines and activities included, Lexia Lessons empower educators to deliver the right instruction, no matter their background or expertise in reading.

Lexia Lessons

LEXIA
POWER UP
LITERACY

Word Study
LEVEL 2 | SYLLABLE TYPES
 Closed Syllables (Short o & u)

PREPARE

CONCEPT
A **syllable** is a word or part of a word with one vowel sound. There are **six syllable types** in English; the most common type is the **closed syllable**. A **closed syllable** ends in at least one **consonant** after one **vowel** and has a **short vowel sound**. Knowledge of syllable types helps students apply word attack strategies for reading and spelling.

TEACHER TIPS

- The **keyword** is important to help students remember the short vowel sound.
- Focus on **o** and **u**, and review **a** and **i** as necessary.
- Review **unfamiliar vocabulary**.
- Read the directions with students.
- Refer to the **Anchor Chart** as necessary throughout.

INSTRUCT

ANCHOR CHART [Display Reproducible page 1.]

- Introduce the **Concept** of this lesson. (See above.)
- Refer to the **Anchor Chart** to review the definition of a **closed syllable**.
- **Point** to each of the keyword cards to review the sounds of the short vowels.
 - **Prompt** students to say the letter name first, then the keyword, stretching out the vowel sound, and then the sound in isolation. For example: **o** (letter name) ... **oooctopus** ... /**o**/, or **a** (letter name) ... **aaapp** ... /**a**/.
- **Dictate** the following words, and stretch out the vowel sound as necessary. Have **students point** to the keyword card that matches the vowel sound in the word:
 - frog, band, luck, stuff, list, sock, tusk, miss, loft, pass
 - Be sure students can identify each short vowel sound before moving on.
- Refer to the **At A Glance** section, and **prompt** students to read aloud each column of syllables. Then, have **students read** across the columns to practice shiffling between the vowels. (Note: Italicized syllables are word parts and cannot stand alone.)
- **Review** the two-syllable words at the bottom. Help students identify the closed syllable patterns in the words. Show students how to divide the words as necessary.

PRACTICE

[Display Reproducible page 2.]

Part A: Reading and Sorting Syllables

- **Students read** the syllables in the box and **write** them in the correct column. If students struggle, have them mark the vowel as short (e.g., *b**o**b*), repeat the vowel sound in isolation, and/or stretch out the vowel sound.

Part B: Writing Words

- **Dictate** the following two-syllable words, using each in a sentence. (Each syllable is in one of the columns.)
 - bobcat, laptop, disgust, muffin, conduct
- **Students circle** the syllables in the columns and **write** the word on the line. continued on next page

Lesson page 1

Lexia Lessons, prescribed when students struggle in the online program, are designed for one-on-one or small-group instruction by a teacher or paraprofessional.

Lexia Skill Builders

Name: _____

Comprehension
Level 15: Tone & Mood

VOCABULARY CONNECTION

A. Read the words in the box below. Each one shares a common meaning with a vocabulary term from the online activity Harlem. Write the word next to the vocabulary term that shares a common meaning. The first one is done for you.

delighted surrender unproductive ~~thoughtful~~ decay unhappy

Harlem Vocabulary Terms

reflective: (adj.) thinking carefully about something

discontented: (adj.) not satisfied

jubilant: (adj.) feeling great happiness

defer: (v.) to surrender in the face of an overwhelming force

barren: (adj.) unable to produce or support new growth

fester: (v.) to become infected or rotten

B. Circle the scenario that best matches the definition of the word. Underline the word or words in the scenario that helped you decide.

<p style="text-align: center; font-weight: bold; font-size: x-small;">reflective</p> <p>Mary wasn't sure what to do, so she thought for a second and made a quick decision.</p>	<p style="text-align: center; font-weight: bold; font-size: x-small;">discontent</p> <p>The dog finished his dinner and fell asleep by the fire.</p>
<p style="text-align: center; font-weight: bold; font-size: x-small;">jubilant</p> <p>The energetic jazz band added to the happy mood of the audience.</p>	<p style="text-align: center; font-weight: bold; font-size: x-small;">defer</p> <p>Janet fought for years to change the law but eventually gave up when she ran out of resources.</p>
<p style="text-align: center; font-weight: bold; font-size: x-small;">barren</p> <p>The farmers were unable to make a living because no crops would grow on the land.</p>	<p style="text-align: center; font-weight: bold; font-size: x-small;">fester</p> <p>The cat's wound started to smell bad and became painful.</p>

POWER UP Lexia Skill Builders® page 1

Lexia Skill Builders provide extra paper-and-pencil practice to help students build automaticity once they have completed a level in the online program.

Differentiating Support for Teachers and Administrators

Assessment Without Testing data, powered by the myLexia platform, provides teachers and administrators with real-time, actionable data that **helps answer relevant questions** for both district/school leaders and teachers at a glance.

In just minutes, teachers can answer:

- 1** Who needs more time in the online program?
- 2** Who needs teacher-led instruction?
- 3** Who is ready for additional practice?

PowerUp not only tells teachers which students are at risk, but what to do about it!

Grade 8 Reading Overview

Student Name ↑	Grade	Zone			Usage This Week				Needs Instruction
		WS	GR	Comp	Total Minutes	Target	Time Needed	Units Gained	
Abdullah, Dima	8th	■	■	■	82	125	+43	2	🚫
Anderson, Wyatt	8th	■	■	■	151	125	0	41	✅
Berger, Jacqueline	8th	■	■	■	33	135	+102	3	🚫
Gonzalez, Ivette	8th	■	■	■	114	125	+11	29	🚫
Haas, Fabian	8th	■	■	■	135	135	0	30	✅
Hughes, Christopher	8th	■	■	■	76	135	+59	14	🚫
Ibbara, Julie	8th	■	■	■	146	135	0	28	🚫
Kim, Sang	8th	■	■	■	142	125	0	50	🚫
Kumar, Ravi	8th	■	■	■	109	135	+26	37	🚫
Miller, Jason	8th	■	■	■	152	135	0	43	🚫
Phan, Khanh	8th	■	■	■	85	135	+50	42	🚫
Ramirez, Olivia	8th	■	■	■	28	125	+97	4	🚫
Robinson, Megan	8th	■	■	■	86	135	+49	13	🚫
Smith, Peyton	8th	■	■	■	30	125	+95	8	🚫
Villanueva, Analyn	8th	■	■	■	95	135	+40	33	🚫
Wright, Catherine	8th	■	■	■	75	135	+60	22	🚫

Skill Status

Students working in each zone of Word Study, Grammar and Comprehension.

Zone	Percentage
Word Study (16)	94%
Grammar (16)	100%
Comp. (15)	93%

Usage

Students with usage that week who are meeting targets.

100%
75%
50%



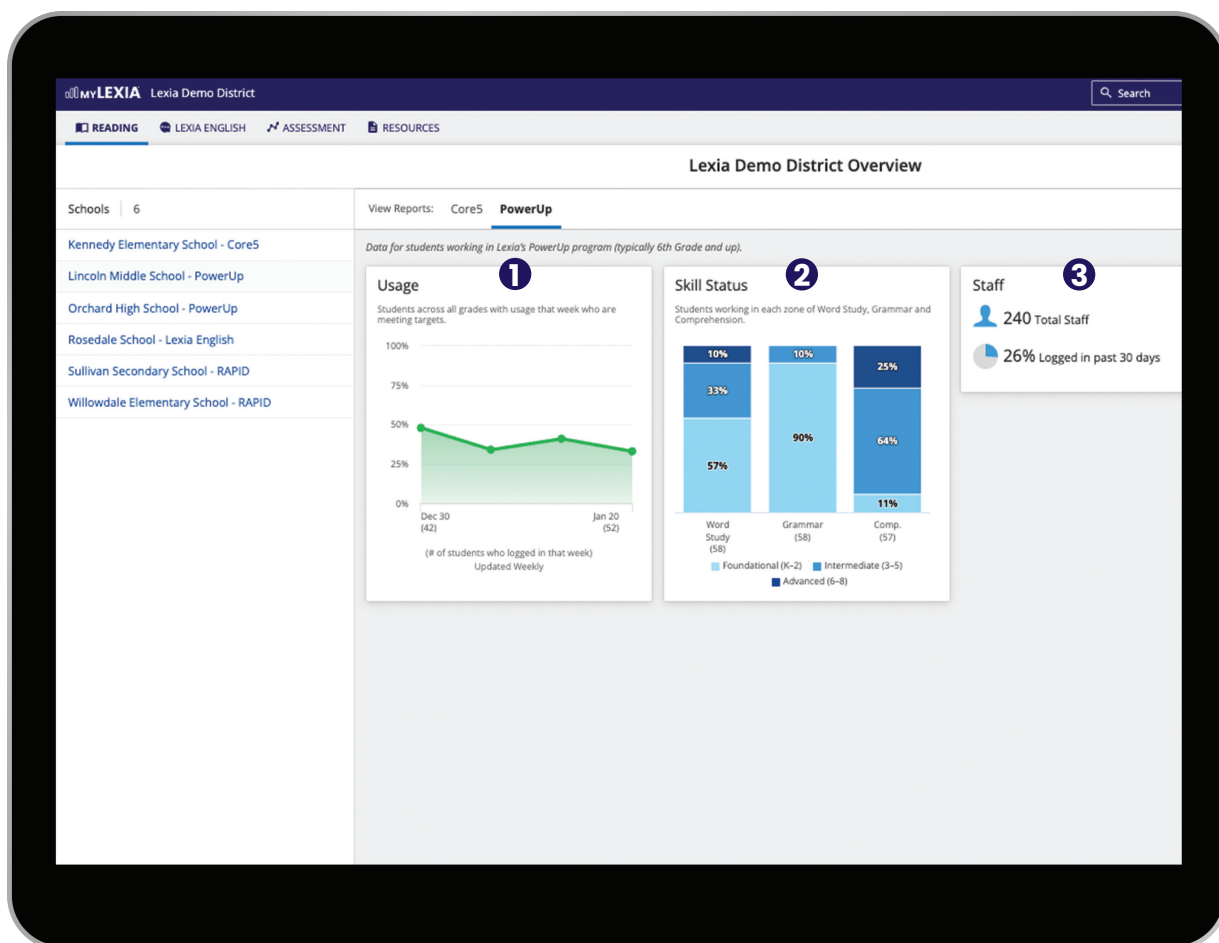
In just minutes, administrators can answer:

- 1 What percentage of students in my building or district are meeting their usage targets?
- 2 What grade level of skills are students in my building or district working on in each of the three domains?
- 3 What percentage of my staff have engaged with the data in the last month?



We implemented Lexia's programs and saw the results in just a couple of months.

— **Chuck Bomboy**, Principal
Central Susquehanna Intermediate Unit,
Pennsylvania





Complements Existing Curriculum

Lexia PowerUp Literacy allows educators, regardless of their areas of expertise, to differentiate instruction and target skill gaps. PowerUp is designed to be used alongside the core curriculum and can flexibly fit into your existing schedule.

Where to Use PowerUp



**ELA Block
Classes**



**Special
Education**



**Before &
After School**



Homeroom



**Intervention
Block**



At Home



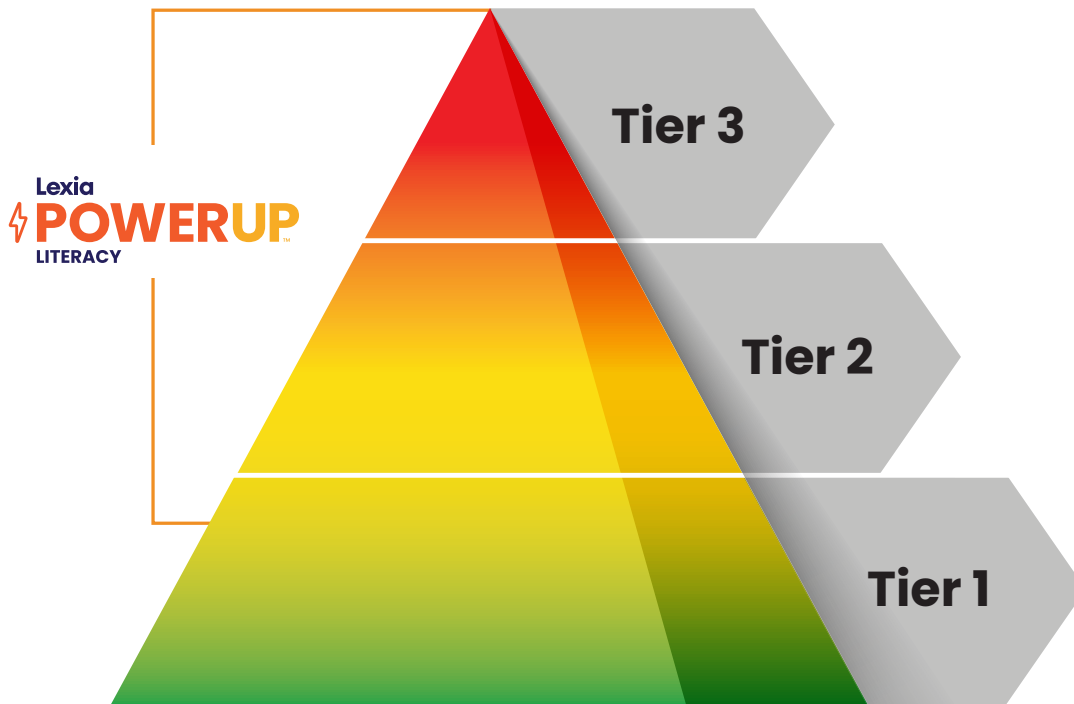
**Computer
Lab**



**Elective
Classes**

PowerUp Supports Diverse Reading Profiles

PowerUp is for students in grades 6–12 in need of additional literacy support, whether they are several grade levels behind or show some risk of not meeting College- and Career-Ready Standards.



Multi-Tier System of Support (MTSS) or Response to Intervention (RTI)

PowerUp not only identifies and fills skill gaps, but can support students as they change tiers. PowerUp can also enhance core instruction for those students who would benefit from building skills related to academic vocabulary, grammar, deep reading, and text analysis.

Emergent Bilinguals

PowerUp builds accuracy, automaticity, and fluency by focusing on effective written and oral communication skills. Students develop grade-level academic vocabulary with embedded picture glossaries. All text passages can be read aloud and Spanish-language supports are provided.

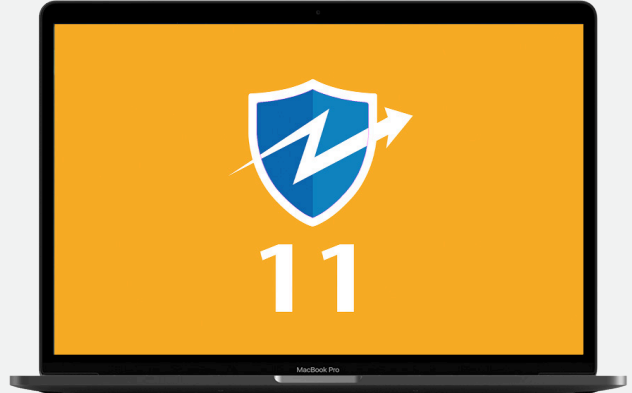
Special Education

Students with specific learning needs, such as dyslexia, develop their literacy skills through explicit, systematic instruction in activities that include guided practice.

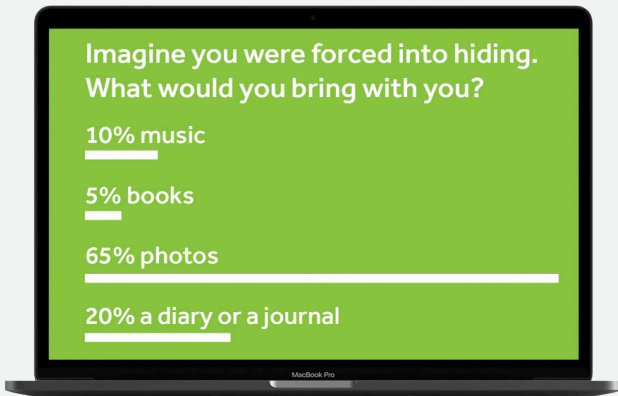
PowerUp Instructional Design and Content Engages the Adolescent Learner



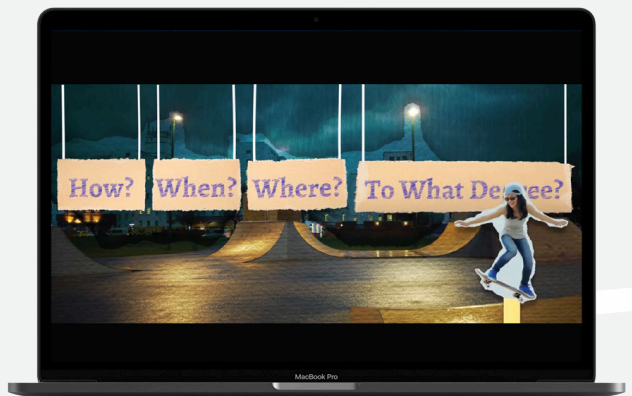
Includes more than 100 high-interest authentic and original texts to engage students in multiple genres, including poetry, drama, informational, narrative, and multimedia.



Game-based elements build stamina and self-progress monitoring while motivating students to do their best work.



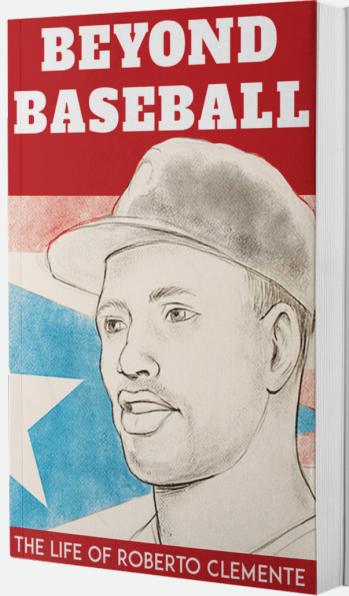
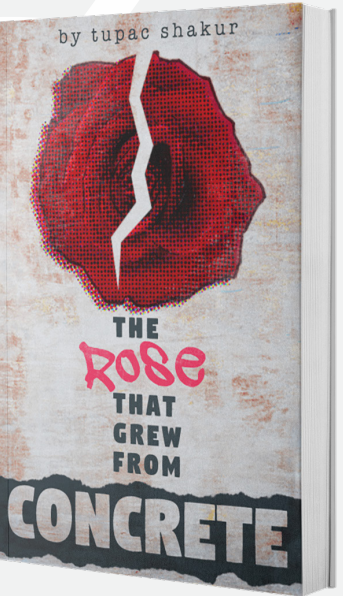
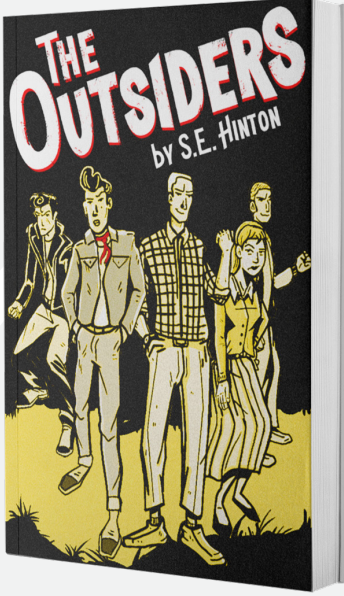
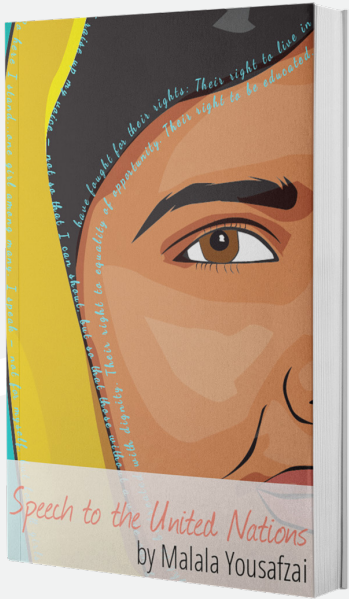
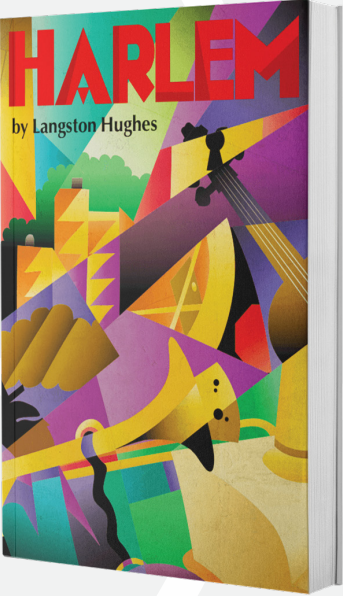
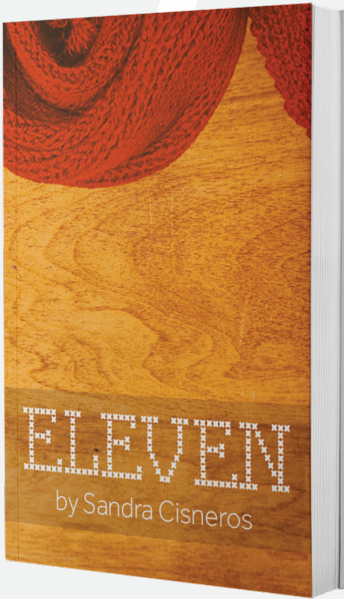
Social components, such as opinion polls, empower students and build a sense of community.



Engaging instructional videos use music and humor to introduce new skills, and beautiful and thoughtfully designed artwork is used throughout to captivate students' attention.

Represents Multicultural Diversity

Selected texts used throughout PowerUp were chosen with culturally responsive pedagogies in mind. The works of diverse writers—including Sandra Cisneros, Tupac Shakur, Malala Yousafzai, John F. Kennedy, S.E. Hinton, Langston Hughes, and many others—are used to engage students, promote ownership of learning, and inspire achievement. PowerUp honors and embraces the differences and perspectives that all writers—and students—carry with them.





Supports Student Agency and Growth Mindset

PowerUp encourages students to take ownership of their own learning while building time-management skills. Students develop agency by choosing instructional strands, while progress-monitoring tools empower students to track progress toward personalized goals.

The progress-monitoring tools and instructional supports throughout the program provide an environment of encouragement, build an understanding that learning is ongoing, and provide students a safe place to try, fail, retry, learn, and succeed.



For each individual who uses Lexia PowerUp Literacy, they're able to pace through the program at what works for them. The self-administered pacing is the best way to meet individual needs.

— **Rebecca Burford**, Student Success Coordinator
Ukiah Unified School District, California

Personalized & Scalable Partnerships

What Makes Lexia’s Partnerships Unique?

Personalized—Every student, class, school, and district is unique. Lexia customizes each partnership so educators and administrators feel confident all aspects of their professional learning goals are accounted for and modified as needed.

Engaging—Lexia partnerships create an environment of engagement, participation, and support. Every interaction is thoughtfully designed to encourage active learning.

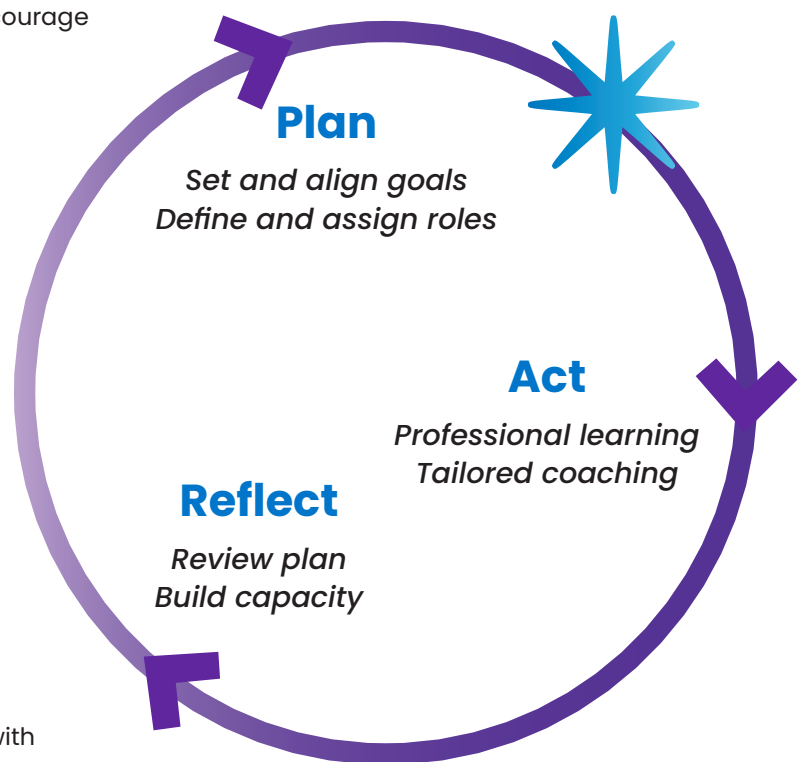
Effective—Grounded in research best practices, Lexia Partnerships deliver the student outcomes educators expect and demand across classes, schools, and districts.

Relevant—Lexia focuses on the most meaningful components of professional learning to seamlessly support educators and administrators in their unique learning environments.

Lexia’s Partnerships are Proven

Students using Lexia products in schools with sitewide Success Partnerships and who use the program with fidelity are five times more likely to reach their end-of-year, grade-level benchmarks in the programs as compared to students using the program a minimum amount.

In schools where the student population could be classified as “high-risk” (more than half of the students began the year working on skills more than two years below grade level), an analysis found **41% of students achieved implementation fidelity** when their school had an Implementation Success Partnership, compared to only **27% of students in schools that did not have one**.





**Contact the Lexia
California Team
to learn more!**

Lexia®

Lexia®, a Cambium Learning Group company, is a leader in science of reading-based solutions. For 40 years, the company has focused on pre-K–12 literacy and today provides solutions for every student and educator. With a complete offering of professional learning, curriculum, and embedded assessment, Lexia helps more learners read, write, and speak with confidence.

    [lexialearning.com](https://www.lexialearning.com)

© 2023 Lexia, a Cambium Learning® Group company. Lexia®, PowerUp®, and other trademarks, names, and logos used herein are the property of Lexia and/or its subsidiaries, and are registered and/or used in the United States and other countries. Additional trademarks included herein are the property of their respective owners. All rights reserved.