



Lexia's Embedded Assessment

The data educators need, without stopping to administer a test

Assessment is embedded into every Lexia® curriculum program through ongoing data collection that helps educators differentiate student instruction between FAST administrations without the need for a testing event. Lexia **saves educators up to a month of instructional time** with personalized, data-driven, B.E.S.T.-aligned action plans and resources for each student.

B.E.S.T. Standards
Integrated

now in
myLEXIA™



Why Embedded Assessment?

EdReports emphasizes the close tie between assessment tools and curriculum: “Results of these assessments offer fine-grained insights that teachers can use to make small, more frequent instructional adjustments to meet student needs. They also follow the curriculum, so you can be certain that what you assess aligns to what you taught” (Alvarez, 2021).¹

Lexia’s embedded assessment offers educators critical insight into student progress that is not always offered by standalone assessments. Lexia provides:

- » Deep understanding of the skills and standards students are *currently* working on, no matter if the students are working below, at, or above their grade levels
- » Greater depth of detail to support timely intervention, enabling educators to make direct links to instructional next steps for their students

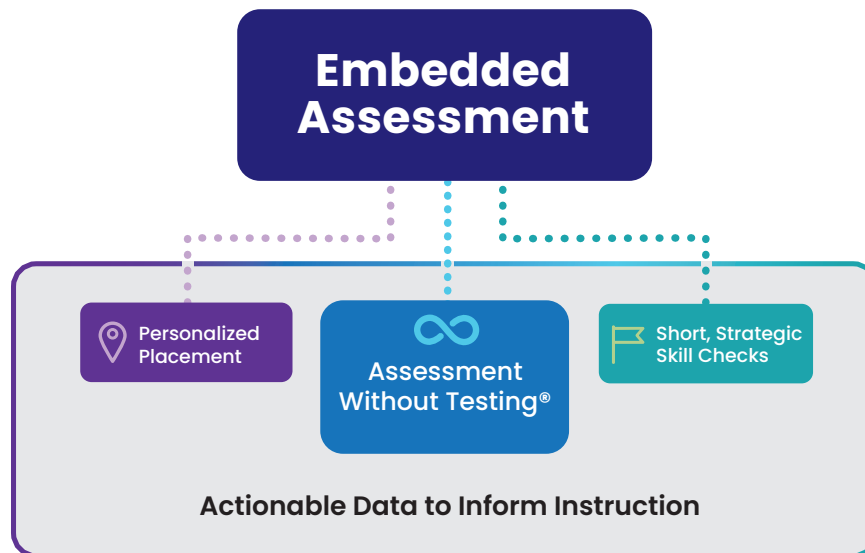
Lexia’s adaptive blended learning model empowers students to develop critical language and literacy skills independently. Personalized learning paths support students of all levels, allowing them to progress at their own pace. Data-driven, B.E.S.T.-aligned action plans assist teachers in making informed instructional decisions, while instructional resources facilitate practice and extension of online learning. This enables teachers to focus on what matters most: **delivering the right instruction at the right time.**



Source: I. Alvarez, Margarita. “What You Need to Know about Curriculum-Embedded Assessments.” EdReports, September 2021, <https://edreports-206618.appspot.com/resources/article/what-you-need-to-know-about-curriculum-embedded-assessments>



What Does Embedded Assessment Look Like at Lexia?



- » **Auto-placement** personalizes learning by ensuring students start the program at their optimal entry points based on their strengths and needs.
- » **Assessment Without Testing® (AWT)** gathers real-time progress-monitoring data directly from students' continuous interaction with instructional activities.
- » **Short, strategic skill checks** provide performance data through quick checks for understanding before students move to new instructional activities.

“

Lexia is by far the best adaptive learning tool available. I can easily monitor students' progress, growth, misconceptions, and mastery of skills, and it gives data and resources I need to facilitate purposeful learning—better than other platforms!

—Alexandra Spraberry
Cherry Hills Christian Lower School
Colorado

How Does Embedded Assessment Empower Educators?

The purpose of assessment falls into four main categories: identify, monitor, collect, and assess (Torgesen, 2006).² Each Lexia program addresses all of these purposes and helps educators plan instruction to meet individual student needs by answering key questions that have historically only been answered by using multiple types of assessments.

Purpose of Assessment	Question it Answers	Type of Assessment	How Lexia Does It
Identify	Which of my students are on track for reading success?	Screening	Auto-placement
Monitor	How much progress are my students making?	Progress monitoring	Assessment Without Testing
Collect	What is the profile of skills for my students? Where do I need to focus my instruction/intervention?	Diagnostic	Assessment Without Testing
Assess	Have my students learned the material that has been taught?	Outcome	Short, strategic skill checks

What Makes Lexia's Embedded Assessment Unique?

Lexia's three-pronged approach to embedded assessment bridges the gap that typically exists between truly responsive, high-quality instruction and detailed, timely performance data to inform that instruction. Educators can be confident that what is assessed directly aligns to what has been taught. This allows Lexia to provide both highly personalized online instruction to students with varied needs and detailed insight to guide educators in providing teacher-led, B.E.S.T.-aligned support at the student's instructional level.

Key Benefits:

- ✓ Detailed data that is linked to targeted, high-quality offline instructional resources
- ✓ Quick and timely insight that reflects students' current knowledge throughout the year without requiring additional time for assessment
- ✓ Allows educators to make targeted, frequent instructional adjustments to meet students' evolving needs
- ✓ Familiar learning context that promotes student confidence and success as students demonstrate their learning

Source 2: Torgesen, J. K. (2006) A comprehensive K-3 reading assessment plan: Guidance for school leaders. Portsmouth, NH. RMC Research Corporation, Center on Instruction



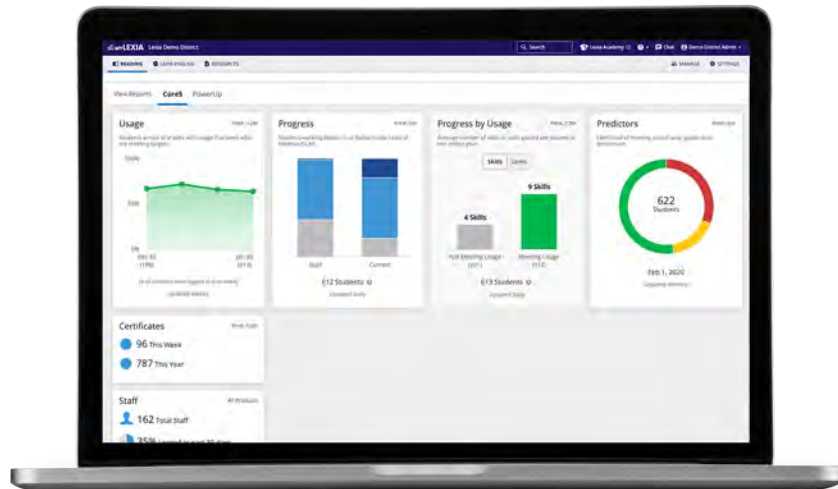
Lexia
Florida

All for Literacy™

© 2023 Lexia, a Cambium Learning® Group company

4

Assessment Without Testing



Lexia's powerful reporting platform: myLexia®

Assessment Without Testing (AWT) is Lexia's patented process of gathering metrics directly from students' continuous interaction with instructional activities.

» **AWT drives the ongoing insight that allows educators to continuously:**

- ✓ Identify student needs
- ✓ Predict future performance
- ✓ Prescribe instructional intensity
- ✓ Provide real-time, B.E.S.T.-aligned data and action plans connected to instructional resources

» **AWT saves student time by:**

- ✓ Recommending personalized usage targets for individual students based on performance
- ✓ Continually adapting recommended program usage targets
- ✓ Enabling students to move on if they demonstrate mastery of skills so they can focus their time where they may need additional support

After just one month of Lexia® Core5® Reading use, Assessment Without Testing identifies a student's overall performance level and predicts their likelihood of reaching their end-of-year, grade-level benchmark. What's more, Core5 also prescribes the instructional intensity required to improve their likelihood of reaching those benchmarks.



Lexia®
Florida

All for Literacy™



About Lexia

Lexia, a Cambium Learning Group company, is a leader in science of reading-based solutions. For nearly 40 years, the company has focused on pre-K–12 literacy and today provides solutions for every student and educator. With a complete offering of professional learning, curriculum, and embedded assessment, Lexia helps more learners read, write, and speak with confidence.

Lexia Core5 Reading

Core5 is an adaptive blended learning program that accelerates the development of literacy skills for students of all abilities, helping them build critical skills in both word recognition and comprehension to support reading success.



Lexia® PowerUp Literacy®

PowerUp accelerates literacy gains for students in grades 6–12 who are at risk of not meeting College- and Career-Ready Standards. Proven to be up to five times as effective as the average middle school reading intervention, PowerUp enables students to make multiple years of growth in a single academic year.



Lexia® English Language Development®

Lexia English is an adaptive blended learning program that supports Emergent Bilingual students' English language acquisition through academic conversations. The program integrates speaking, listening, and grammar in the subjects of math, science, social studies, general knowledge, and biographies.



When we started using Core5, we immediately saw how effective it was. We found ourselves saying, 'Oh wow, this is so different—this program really works!'

—Alexandra Prieto, Principal
Broward County Public Charter Schools
Florida



Lexia
Florida