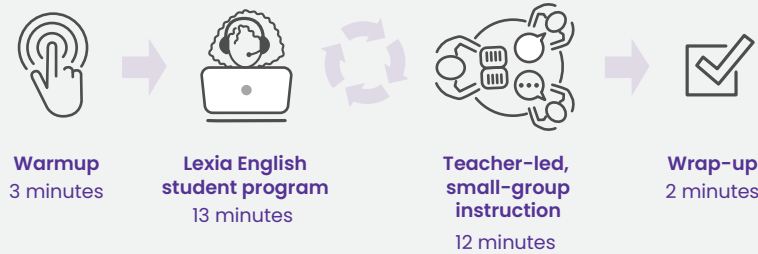


# What can Lexia® English Language Development™ implementation look like during Designated ELD instruction?

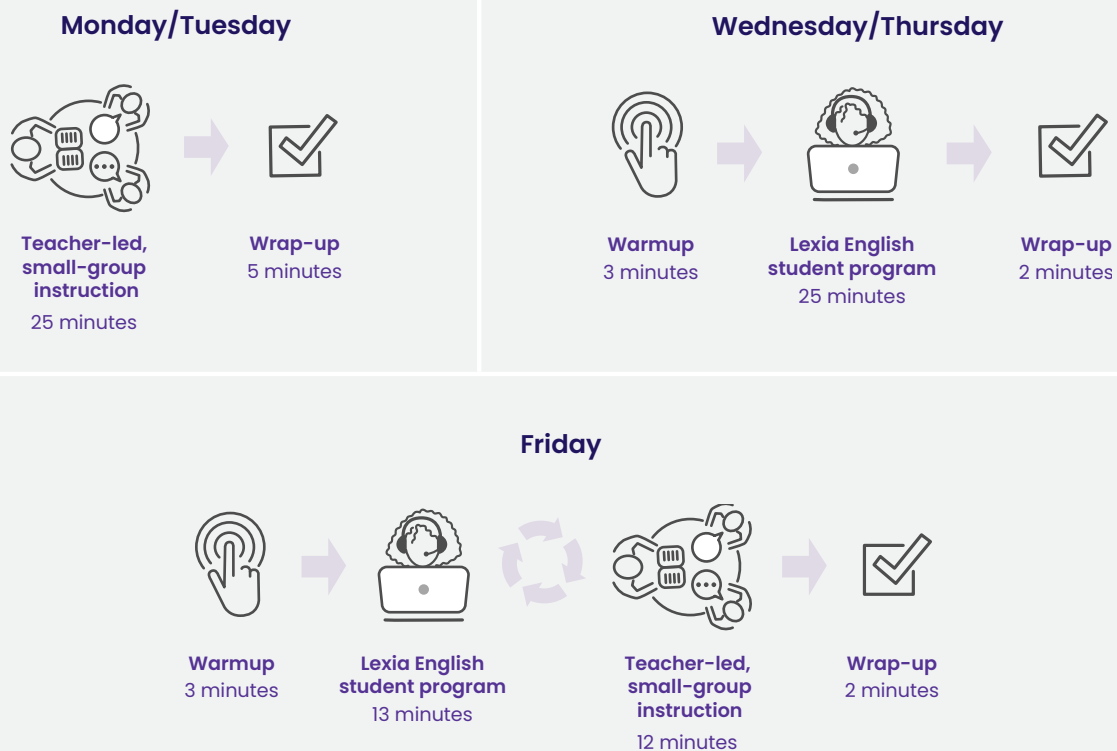
## OPTION A

In this model, a group of students will work independently in the Lexia English student program, while the teacher works with the rest of the students using the teacher-led Lexia Lessons®. The groups will rotate, allowing the teacher to work with all the students as needed throughout the week using the program's handy grouping recommendations for small-group instruction.



## OPTION B

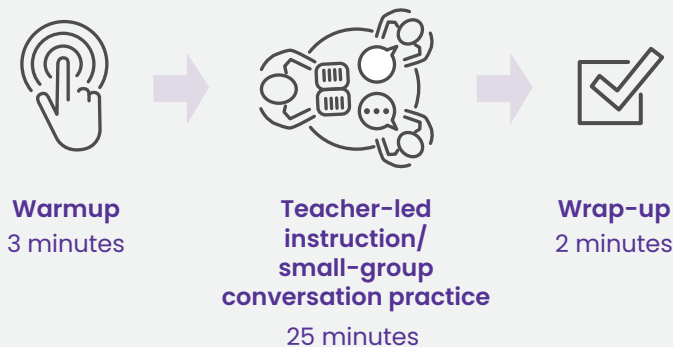
In this model, the teacher will front-load the skills for the week through teacher-led Lexia Lessons on Monday and Tuesday. During the rest of the week, the students will work independently in the Lexia English student program while the teacher monitors and utilizes the data to plan additional small-group instruction on Friday or for the following week.



## OPTION C

For school districts that implement an extended learning model, Emergent Bilingual students will work with their teacher using the Lexia Lessons for Speaking Practice, Lexia Lessons for Listening Practice, and Lexia Skill Builders® during daily Designated ELD instruction. During extended learning opportunities before or after school, students will work independently on the online Lexia English student program. The teacher will monitor and utilize the data obtained during extended learning to plan for targeted daily Designated ELD instruction.

### Designated ELD Instruction 30 minutes / 5 days per week



### Before/After-School Extended Learning 25 minutes / 3 days per week

