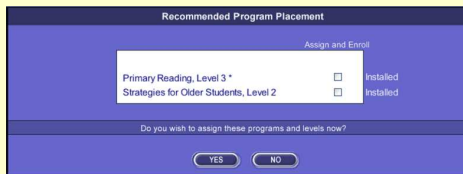


Program Enrollment

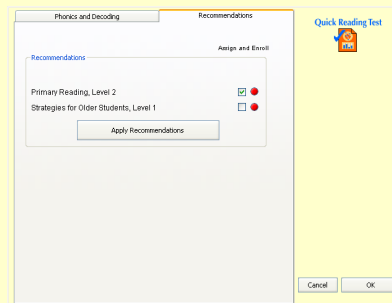
- Allows teacher to limit student access to selected programs
- Not enrolled in anything = access to all programs
- Enrollment available in 3 places:

Recommended Placement Immediately After QRT Test



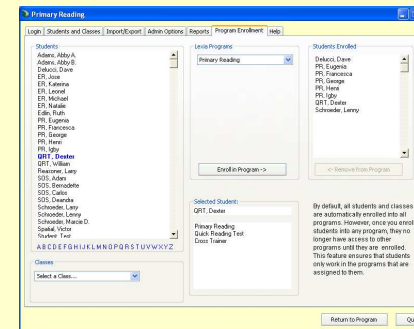
- Selected program(s)
- QRT
- Cross Trainer (if installed)

Student Properties for QRT Apply Recommendations



- Selected program(s)
- QRT
- Cross Trainer (if installed)

Using Admin Program Enrollment



- Selected program(s) only

Program Enrollment

- Why give access to all programs for students not enrolled in any program?

If by default students were not given access to any program, when this feature gets installed in a school currently using Lexia, it would appear that all the students had “disappeared” from the database!

Primary Reading

Login Students and Classes Import/Export Admin Options Reports Program Enrollment Help

Students

- Adams, Abby A.
- Adams, Abby B.
- Delucci, Dave
- ER, Jose
- ER, Katerina
- ER, Leonel
- ER, Michael
- ER, Natalie
- Edlin, Ruth
- PR, Eugenia
- PR, Francesca
- PR, George
- PR, Henri
- PR, Igby
- QRT, Dexter**
- QRT, William
- Reasoner, Larry
- SOS, Adam
- SOS, Bernadette
- SOS, Carlos
- SOS, Deandra
- Schroeder, Larry
- Schroeder, Lenny
- Schroeder, Marcie D.
- Spatial, Victor
- Student Test

A B C D E F G H I J K L M N O P Q R S T U V W X Y Z

Classes

Select a Class...

Lexia Programs

Primary Reading

Enroll in Program ->

Selected Student:

QRT, Dexter

- Primary Reading
- Quick Reading Test
- Cross Trainer

Students Enrolled

- Delucci, Dave
- PR, Eugenia
- PR, Francesca
- PR, George
- PR, Henri
- PR, Igby
- QRT, Dexter
- Schroeder, Lenny

<- Remove from Program

By default, all students and classes are automatically enrolled into all programs. However, once you enroll students into any program, they no longer have access to other programs until they are enrolled. This feature ensures that students only work in the programs that are assigned to them.

Return to Program Quit