



Lexia Data Monitor for use with LexiaServer Database Service

The Lexia Data Monitor is a stand-alone application that is used exclusively with network installations of Lexia products using the LexiaServer database service. **The Lexia Data Monitor allows the server administrator to start and stop the LexiaServer database service as well as backup and the Lexia database.** Repairing database corruption can improve the way Lexia applications work.

Do You See Database Corruption?

You may see the following errors when running Lexia if you have database corruption:

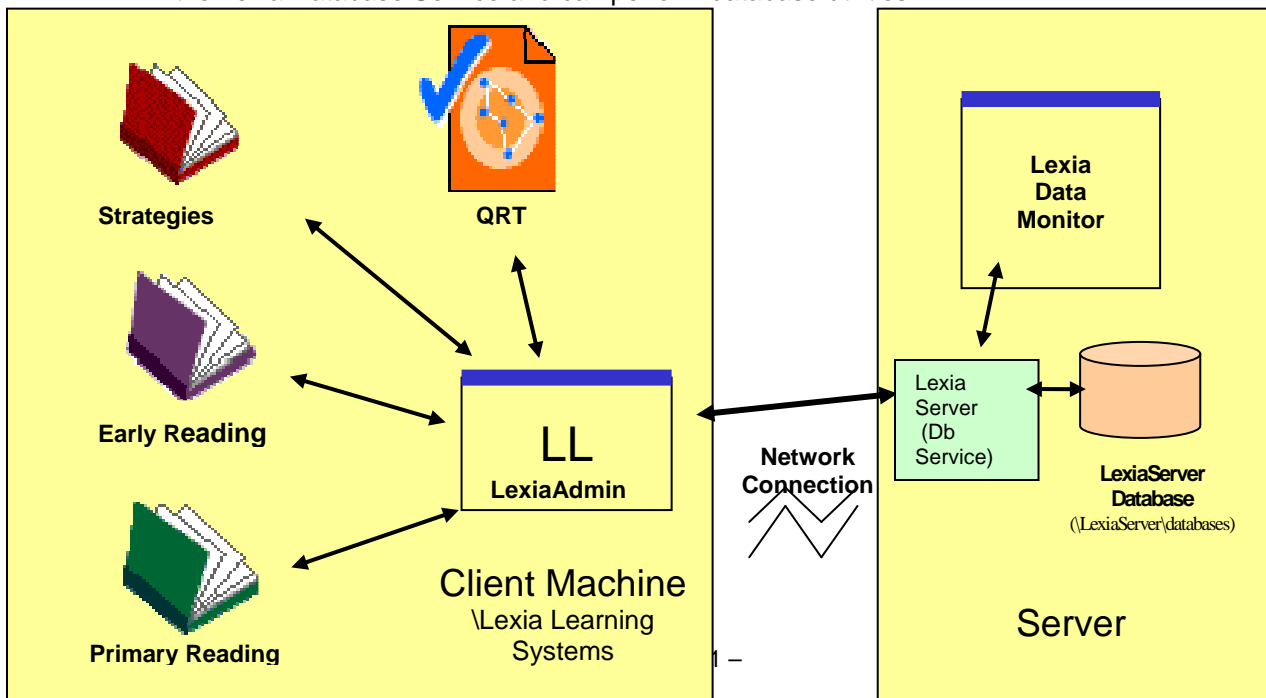
(-2003) Required fields are missing
List expected for handler #count
(-39) Unknown error

Background on the LexiaServer Database Service

The LexiaServer database service is installed on the machine that will host the Lexia database. This service allows the database to manage multiple concurrent connections to the database. Some important things to know about the **LexiaServer database service**:

- Should only be installed once on the machine that is hosting the Lexia database.
- Makes an entry into the system registry.
- The service is setup to automatically start upon system startup.
- The service must be stopped before any backups or other utilities are run on the Lexia database.

The diagram below is a visual representation of the interaction between the various components in a recommended client-server install. The Lexia Data Monitor (LDM) manages the Lexia Database Service and can perform database utilities.





Installation of the Lexia Data Monitor

Download the self-extracting Lexia Data Monitor installation for your operating system (there are different versions for Windows and Mac OSX) from www.lexialearning.com. Copy this installation package to a temporary directory on the machine where the LexiaServer database service is installed.

1. Double-click on the package.
2. Click on the **Setup** button.
3. On the welcome screen for the Lexia installer, click **Next**.
4. Click **Browse** to select a location to install the Lexia Data Monitor. The default location of C:\Program Files\Lexia Data Monitor is suggested. Click **Next**.
5. The installer will check your system settings. When prompted, click **Install**.
6. Click **Yes** to create a desktop shortcut.
7. Click **Yes** to create a program group with shortcuts.
8. Click **Quit** to end the installation.

Starting Up

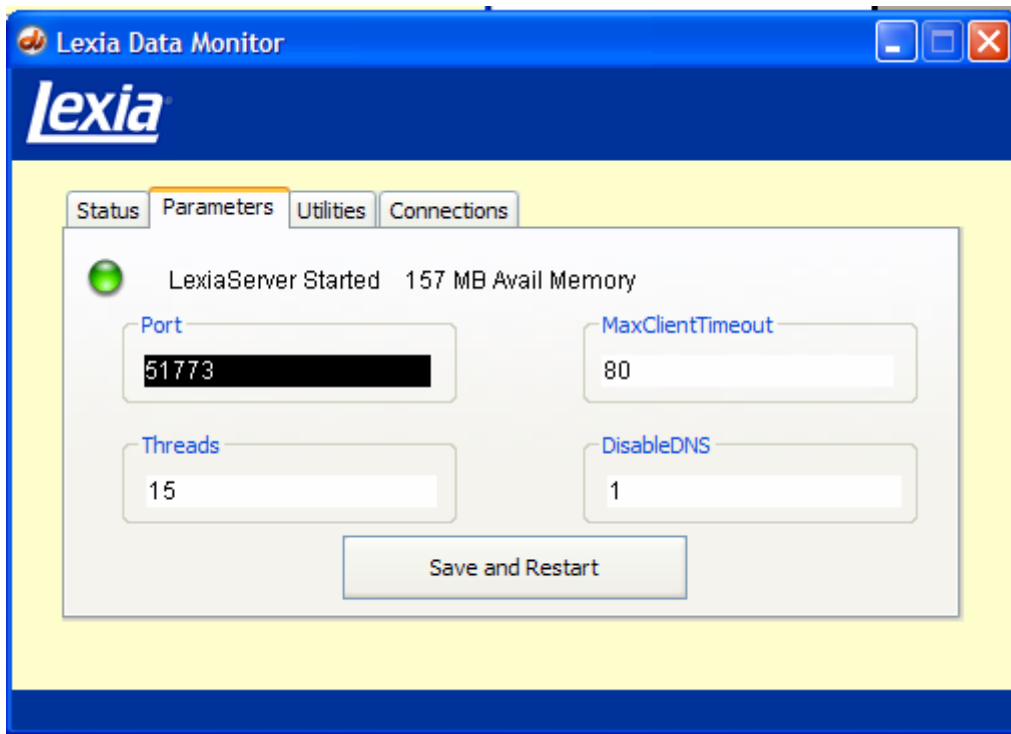
1. Double-click the **Lexia Data Monitor** icon on your desktop.
2. Wait for the Lexia Data Monitor screen to refresh and display the status of the LexiaServer database service. *Users of the Mac version must login as the root account to use the Lexia Data Monitor. The Lexia Data Monitor will prompt for this password.*
3. Navigate to one of the four tabs displayed by clicking on the tab.
 - a. Status
 - b. Parameters
 - c. Utilities
 - d. Connections



Status

Buttons on this tab will allow you to start and stop the LexiaServer database service (referred to as “LexiaServer”). The current status of the LexiaServer will be displayed as well as the available system memory. Click on either the **Start Server** or **Stop Server** button to change the status of the LexiaServer. The current status will change after a short delay.

The LexiaServer needs to be *started* for users to use Lexia programs. Prior to doing any backups or other database utilities you should change the status to *stopped*. Make sure that users are not using any of the Lexia programs before changing the status of the LexiaServer. Failure to do so may result in database corruption.

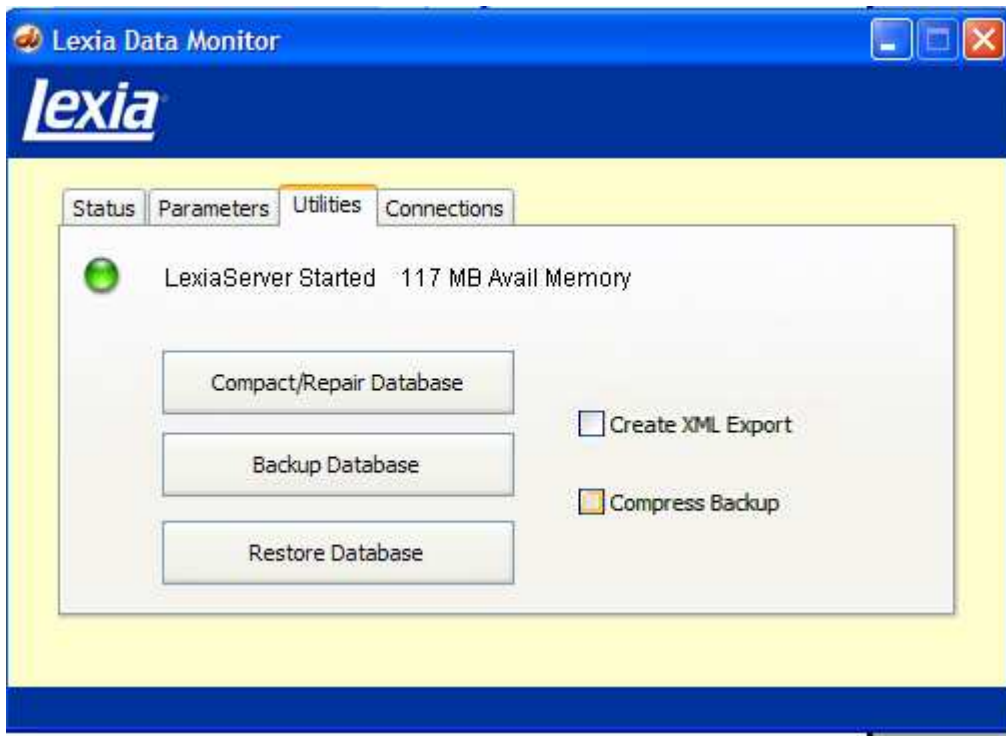


Parameters (not on Mac version)

Clicking on the Parameters tab will show you the installed location of the LexiaServer as well as configuration settings for the Lexia database. Any changes to the values on the Parameters tab are not saved until **Save and Restart** is clicked. Clicking this button will stop the LexiaServer, write these values to the configuration file (\LexiaServer\lexiaserver.ini), and restart the LexiaServer. The most critical settings are Port and DisableDNS.

Port	51773 (required)	this port must be opened on firewall
DisableDNS*	1	poor response time may occur if 0
Threads	15	ignored if threading not supported (max 15)
MaxClientTimeout	80	(minutes) close if connection not in use

*Lexia uses the IP address for the database machine (must be a static IP)



Utilities

There are three buttons on the Utilities tab that are used to perform database maintenance.

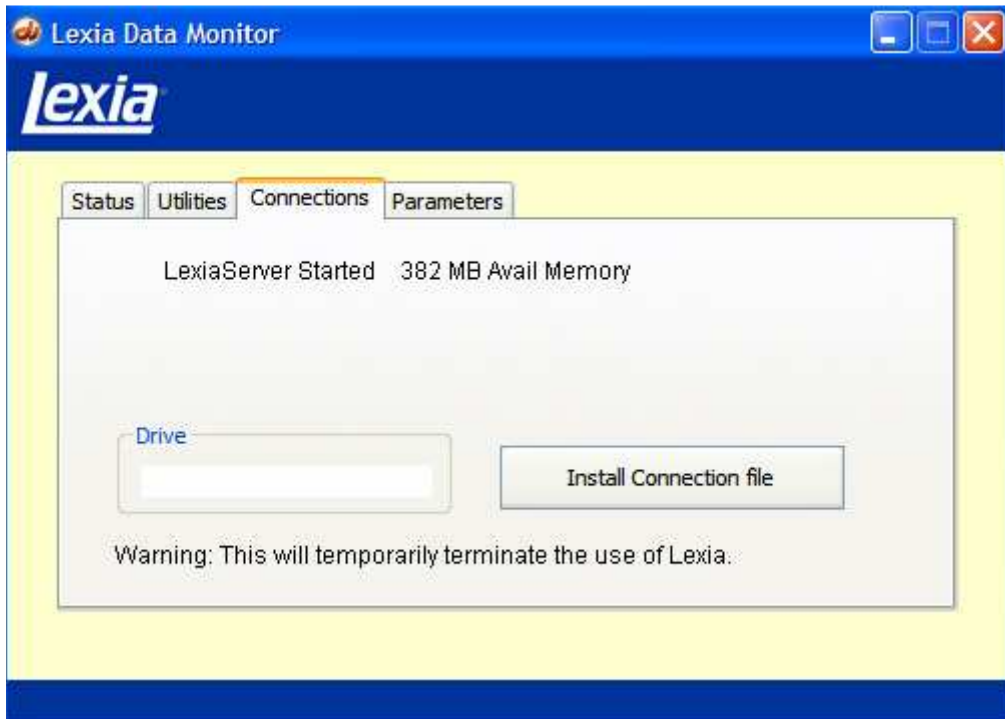
Compact/Repair Database – Clicking this button will make a backup of your database. Click the button and browse to the location of your database. Click **OK**. You will be prompted to choose a folder for your work files. (Suggestion: create a subdirectory under \LexiaServer called workfiles. You must have write access to this folder)

Backup Database – When you click on this button you will be asked to select a destination for your database backup. (Tip: make a copy of the backup files to a different machine, preferably offsite.) Click **OK**. You will get a message that the backup completed; click **OK**.

Backups are stored in subdirectories under the destination directory you chose for your backup. The subdirectory is named with the date of the backup. Backups done on the same date are given sequential differentiators to keep the backups separate.

Restore Database – When you click on this button you will be asked to select the location for the database that you wish to restore from (a prior backup).

Compress Backup – When you check this box your backup will be compressed after it is made. Use this to save space on the hard drive.



Connections

Connections files are used by the Lexia database to manage the number of concurrent database connections that are allowed at any one time. Your installed connections file(s) are located in the \LexiaServer\licenses folder. Use the Connections button to install a connections file from a Lexia disk. (Note: Future Lexia releases will have connections files on the disk).