

School-to-Home Connection Instructions

Step One: Download the Lexia Reading® Student Software

1. On the computer where you wish to install the Lexia Reading software, open a web browser and navigate to <http://www.lexialearning.com/support/lexiareading/license.html>.
2. You will be brought to a page where you need to accept the Lexia Reading License Agreement. Please read and select Accept to proceed to the Lexia Reading Student Software Downloads page.
3. On this page are downloads for Windows and Macintosh systems. Click the link for the appropriate version for your computer to begin the download process. If you are prompted to Save or Run, choose to Save the download, and to place it on your desktop.
4. After the download finishes, proceed to the installation instructions.

Step Two: Installing Lexia Reading Student Software

Please make sure that your machine meets the system requirements for Lexia Reading Student Software before installation.

System Requirements

Macintosh

- Mac OS X 10.3+
- At least 256 MB of RAM
- At least 500 MB hard drive space
- Speakers or headset (headset recommended)
- 32 MB accelerated video graphics card or better

Windows

- Windows 2000, XP SP2, Vista
- At least 256 MB RAM
- At least 500 MB hard drive space
- Speakers or headset (headset recommended)
- 32 MB accelerated video graphics card or better

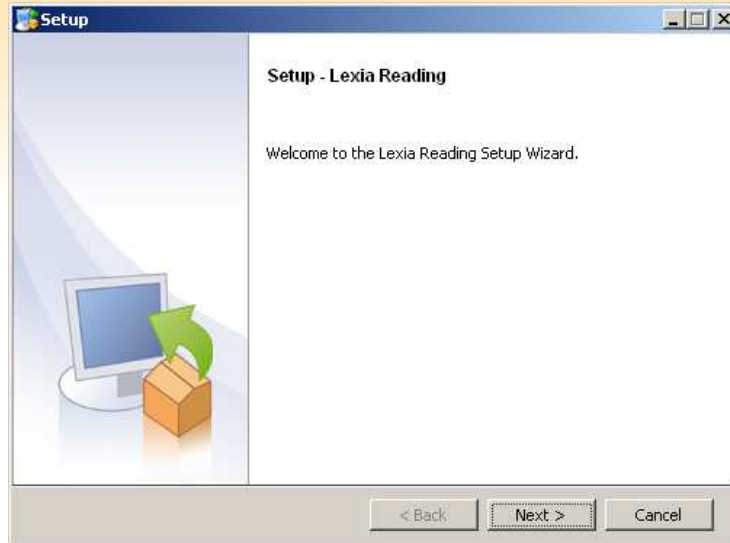
WINDOWS STUDENT SOFTWARE INSTALLATION

1. Double-click on the downloaded Lexia Reading.exe to start the installation.

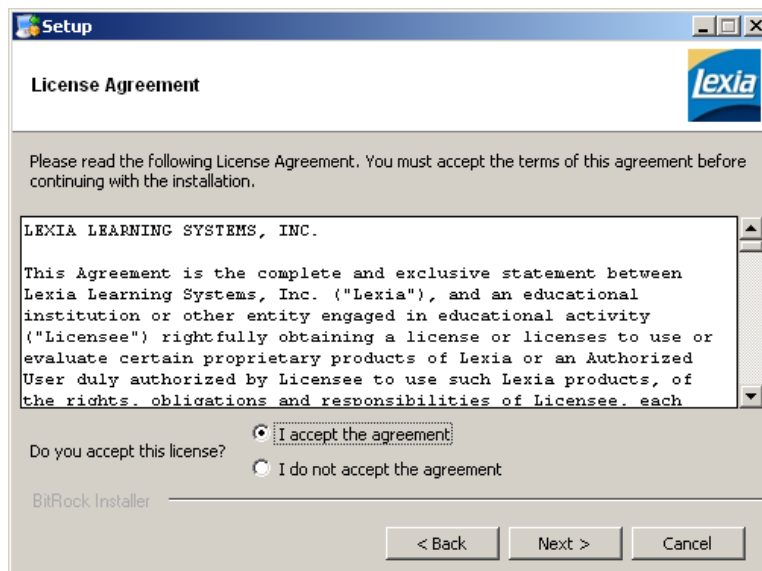


2. Click on the Run button to launch the installation program.

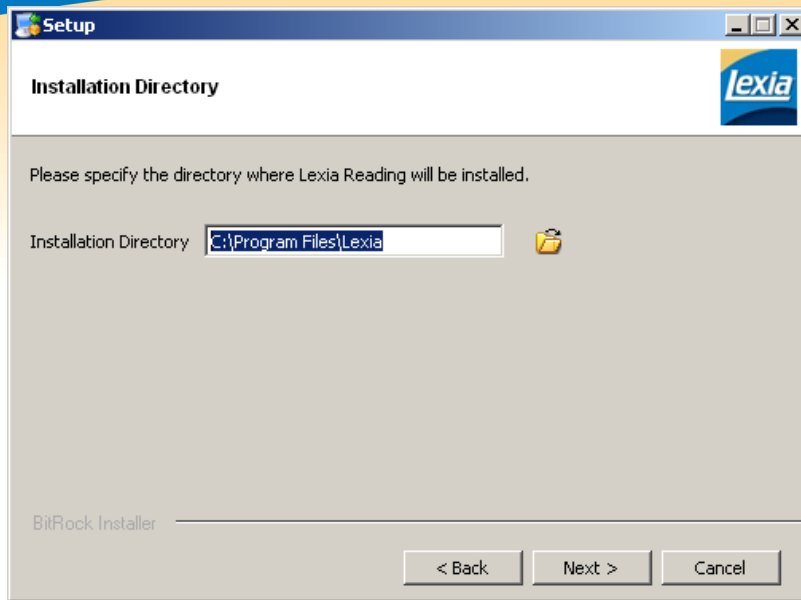
You may receive a warning message from Windows, saying the publisher of the software is unknown. This is normal, and it is safe to click OK to continue with the install.



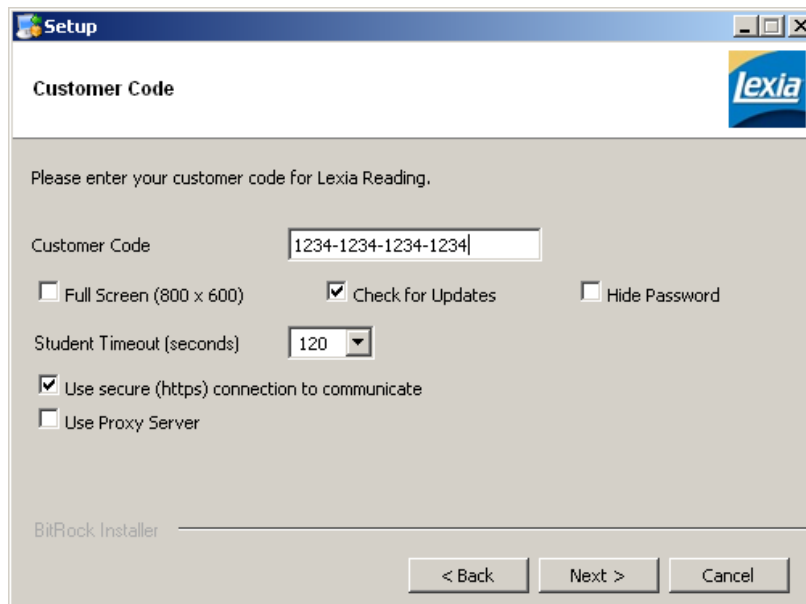
3. Click the Next button.



4. Read the terms of the license agreement, and click "I accept the agreement." If you do not accept the license agreement, the installation will not proceed. Click the Next button.

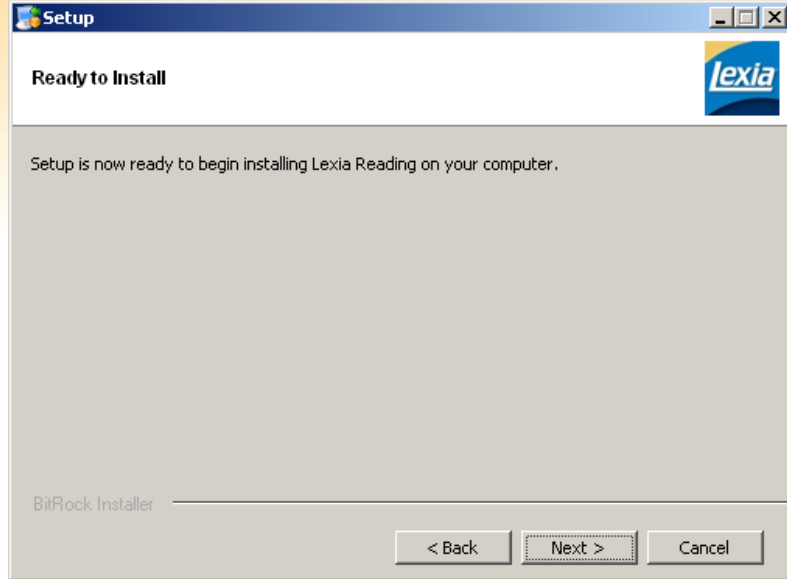


5. *Lexia Reading* will be installed into C:\Program Files\Lexia (C:\Program Files\Lexia Reading UK) by default; this location is strongly recommended. (If you wish to select a different location click the folder and select a different location. Click the OK button to select this location) Click the Next button.

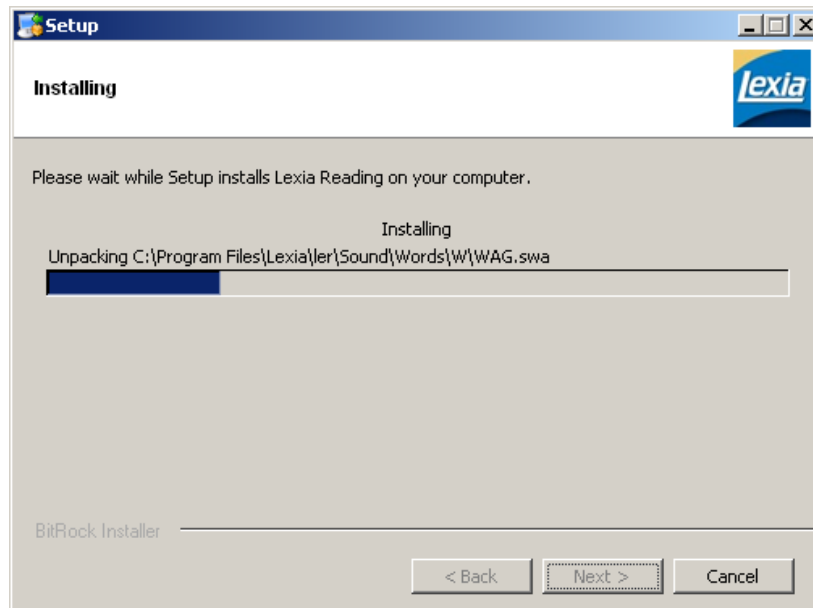


6. Enter your customer code (this will be supplied by your school or district). Select the configuration options you wish on the screen. See the Configuring

Lexia Reading section in this document for more information on the configuration options available). Click Next.



7. Setup is now ready to install *Lexia Reading* student software on the machine. Click Next to continue with the installation.



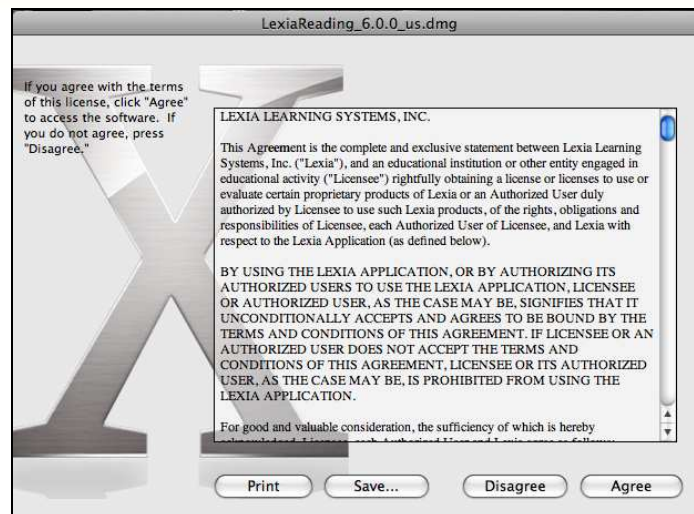
8. You will see a progress bar move across the screen as the installation proceeds. Lexia Reading will create a program group and shortcuts for the application.



9. When you see a message that installation is complete, click on the box labeled "Do you want to launch Lexia Reading now?" and click the Finish button.
10. Go to the Configuring *Lexia Reading* section in this document for instructions on how to configure the *Lexia Reading* application. This will need to be done prior to distributing the installation to other student machines.

MACINTOSH STUDENT SOFTWARE INSTALLATION

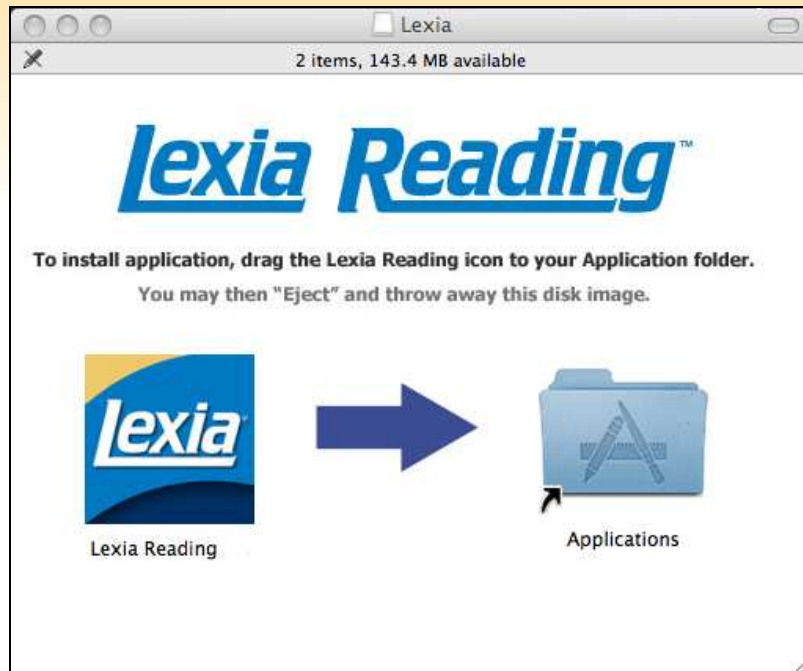
1. Download the Macintosh version of the student software to the Macintosh student machine you wish to install *Lexia Reading* on.



2. Read the terms of the license agreement, and click "Agree." If you do not accept the license agreement, the installation will not proceed.



3. Double-click the Lexia volume on the Desktop to open it if it does not open automatically.



4. A window will open on the screen. Simply drag and drop the Lexia Reading (Lexia Reading UK for UK versions) icon from the left to the Applications folder on the right of the window. This will install the Lexia Reading student software as Lexia Reading (Lexia Reading UK for UK versions) under Applications.
5. Go to the Configuring *Lexia Reading* section in this document for instructions on how to configure the *Lexia Reading* application. This will need to be done prior to distributing the installation to other student machines.

Configuring Lexia Reading

1
You will need your unique customer code available to configure the installed software prior to initial use.



1. Double-click on the Lexia Reading icon to launch the product. If Lexia Reading is not yet configured, the settings screen will display.

NOTE: To bring up the settings screen at a later date to change any of the settings, after you double-click on the Lexia Reading icon, hold down the "A" and the "S" keys until the configuration screen is displayed.

A screenshot of the Lexia Reading settings application window. The window has a blue title bar with the Lexia logo and the tagline "Our World Begins with Reading®" on the left, and a red "STOP" button on the right. The main content area is yellow and contains three sections: "General Settings", "Advanced Settings", and "Proxy Settings".
- **General Settings:** Includes a "Customer Code" text box with the value "1234-1234-1234-1234" and a "Product Updates" button labeled "Install Update".
- **Advanced Settings:** Includes a "Server URL" text box with the value "https://student.mylexia.com", "Additional Options" with checkboxes for "Full Screen (800 X 600)", "Hide Password", and "Check for Updates" (checked), and a "Student Timeout (Seconds)" dropdown menu set to "120".
- **Proxy Settings:** Includes four text boxes for "Proxy Address", "Proxy Port", "Proxy User", and "Proxy Password".
At the bottom right of the settings area are "Save" and "Cancel" buttons.

2. Make changes to the Settings Screen if needed.

General Settings

- Customer Code - Enter your customer code into the space provided.
- Product Updates - This button will be clickable if any updates are available.

Advanced Settings

- Server URL - should not be changed (<https://student.mylexia.com>)

- Full Screen (800 x 600) – check if you want to change your screen resolution to 800 x 600. Otherwise, Lexia Reading will use your default screen resolution and put a black border around the application to hide the desktop.
- Check for Updates – leave checked if you want an icon to appear on the login screen when student software updates are available.
- Hide Password – the default setting is for the student password to be displayed during entry; check this option if you want to obscure the password during entry.
- Student Timeout (Seconds) – leave at 120 seconds unless your student software gets timeout messages while running on your network.

Proxy Settings

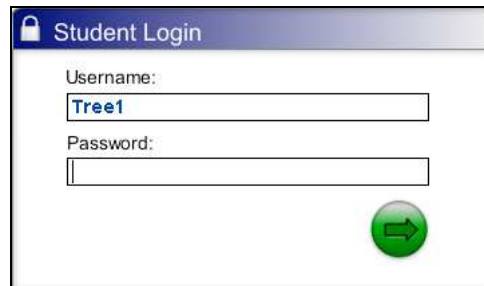
This is not required for home use. Please leave blank.

3. Click Save. Your installation is now configured for use.

Windows Vista Ultimate users may need to reconfigure their configuration settings to overcome old settings being saved in shadow files. The best way to do this is to double-click on the Lexia Reading icon, hold down the “A” and the “S” keys until the configuration screen is displayed. Make sure the server URL is: <https://student.mylexia.com>. Save your changes.

Step Three: Using Lexia Reading

1. At the login prompt, enter the student’s username and optional password (leave the password field blank if there is no assigned password) and click the green login arrow.



2. Choose from the displayed Lexia Reading programs and activities. These will vary depending upon what the teacher has assigned the student.
3. To exit, continue clicking the red stop sign icon to move backwards through the screens until you exit the program.