



## Lexia Network Installation Instructions

For Lexia Early Reading 3.x, Primary Reading 1.x, Foundation Reading 1.x, Strategies for Older Students 4.x, Cross-Trainer 1.x and Quick Reading Test 2.x (NOT for Lexia Reading)

### Minimum Requirements

#### Lexia Server

Windows 2000, XP  
Windows Server 2000, 2003 R2  
Mac OS X 10.2.8 - 10.4.11  
Mac OS X Server 10.2.8 - 10.4.11

1GB RAM  
100MB Hard Disk Space  
Static IP Address

*If this is a Novell network, the software must be installed on a dedicated workstation, not the Novell server.*

#### Lexia Student Software

Windows 98, 2000, XP  
Mac OS 9.2.2  
Mac OS X 10.2.8 - 10.4.11

128MB RAM (\*256 for Cross-Trainer)  
16MB Dedicated Video RAM  
500MB Hard Disk Space

Pentium II (500MHz) or higher processor for PCs, or G3 or higher processor for Mac  
\*Cross-Trainer requires a 1Ghz PC processor, or a G4 processor on Macs

### Recommended Installation Overview

Lexia programs on a network require one installation of the Lexia Server software and installation of the student software (client) on each student workstation that will be used.

The Lexia Server software should be installed on an individual server or dedicated workstation (that meets system requirements) somewhere on your network. It will run the Lexia Server service and will make the database available to any student machines configured to connect to it. ***You only need a single Lexia Server install, no matter how many Lexia products you are using.*** The server must have a static IP address. If port 51773 is blocked by a firewall, an exception must be made to allow traffic to and from the server on that port.

**The Lexia student software must reside on each student's workstation- it should not be shared off of a network server.** All Lexia products install into the same folder (the ..\Lexia Learning Systems folder for US products and the ..\Lexia UK folder for UK products) and share data and settings amongst themselves. The Lexia student software will be configured to connect to the Lexia Server via the server's IP address.

If you anticipate having multiple (5+) students using Lexia products simultaneously, you should contact Lexia Support to obtain a **connections file**. See Step 7 below for more details.

**Lexia student software should *not* be run on thin clients, terminal services, dumb terminals, or any other form of PC sharing or remote access. Linux, Windows Vista, and Mac OS X 10.5+ are *not* supported for server or student software installs.**



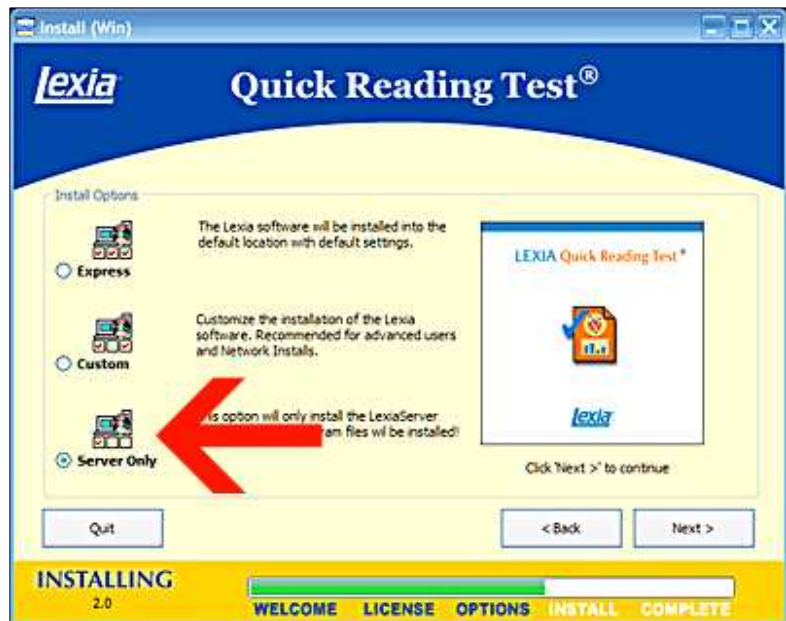
## **Step 1: Installing the Lexia Server Software**

### **Windows**

Insert any one of the Lexia software CDs you have been issued into the server you wish to host the database on. You will only need to install the server software once, on a single machine, no matter how many Lexia products you are using.

If the installer does not auto-run, open My Computer, then double-click the icon for the Lexia product CD in the CD drive. Then double-click the installer to begin the installation process.

At the Install Options screen, choose "Server Only" as the install choice, and then click Next.



The recommended installation path is the default – C:\LexiaServer. You may change this as needed. After the installation finishes, you will see a notification in the left part of the window saying, "Installation Finished." Click the Quit button and eject the CD. You can verify that the Lexia Server service is running by checking the Service panel under Control Panel > Administrative Tools, and seeing if the service is listed and started.

### **Mac OS X 10.2.8 through 10.3.9**

Insert any one of the Lexia software CDs you have been issued into the server you wish to host the database on. You will only need to install the server software once, on a single machine, no matter how many Lexia products you are using.

After inserting the CD, double-click on the CD icon that appears on the desktop. Then double-click the installer icon to begin the installation process.

At the Install Options screen, choose "Server Only" as the install choice, and then click Next.

The recommended installation path is the default – Macintosh HD: LexiaServer. You may change this as needed. After the installation finishes, you will see a notification in the left part of the window saying, "Installation Finished." Click the Quit button and eject the CD. You can verify that the Lexia Server service is running by running Activity Monitor from the Utilities folder, and checking to see if LexiaServer is running as a process under Root.

### **Mac OS X 10.4 through 10.4.11**

Download the 10.4.x Server software from our website.

Double-click the downloaded zip file to extract it to a folder, then open the folder and double-click on the installer icon to begin the installation process.

At the Install Options screen, choose "Server Only" as the install choice, and then click Next.

The recommended installation path is the default – Macintosh HD: LexiaServer. You may change this as needed. After the installation finishes, you will see a notification in the left part of the window saying, "Installation Finished." Click the Quit button and eject the CD. You can verify that the Lexia Server service is running by running Activity Monitor from the Utilities folder, and checking to see if LexiaServer is running as a process under Root.

## **Step 2: Installing the Lexia Student Software**

### **Windows**

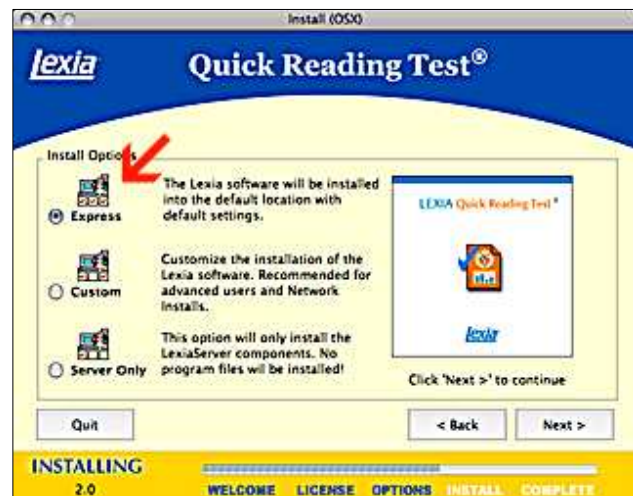
Insert one of the Lexia product CDs into the drive of a workstation. (Preferably the QRT disk, otherwise any Lexia CD will do.) If the installer does not auto-run, open My Computer, then double-click the icon for the Lexia product CD in the CD drive. Then double-click the installer to begin the installation process.

When prompted for an installation type, choose Express Install, and then click Next. This will install the software to C:\Program Files\Lexia Learning Systems (or "Lexia UK" in the UK). After the installation is complete, a message will appear saying that the installation has completed. Click Quit, and eject the CD. Repeat the process for each Lexia student program you have.

### **Mac OS X 10.2.8 through 10.3.9**

Insert one of the Lexia product CDs into the drive of a workstation. (Preferably the QRT disk, otherwise any Lexia CD will do.) Double-click the icon for the Lexia product CD that appears on the desktop. Then double-click the installer to begin the installation process.

When prompted for an installation type, choose Express Install, and then click Next. This will install the software to Macintosh HD: Applications: Lexia Learning Systems (or "Lexia UK" in the UK). After the installation is complete, a message will appear saying that the installation has completed. Click Quit, and eject the CD. Repeat the process for each Lexia student program you have.



### **Mac OS X 10.4 through 10.4.11**

Contact Lexia Customer Support for a 10.4-specific downloadable package, that replaces the contents of all individual product CDs. This package will include its own installation instructions. Lexia Support can be reached at (800) 507-2772, online at [www.lexialearning.com/about/contact\\_request.html](http://www.lexialearning.com/about/contact_request.html), or at [support@lexialearning.com](mailto:support@lexialearning.com).

### **Step 3: Applying Student Software Updates**

You will need to download and install updates for the Lexia student software. These can be obtained from our website:

<http://www.lexialearning.com/forschools/support/productupdates.html> (US)

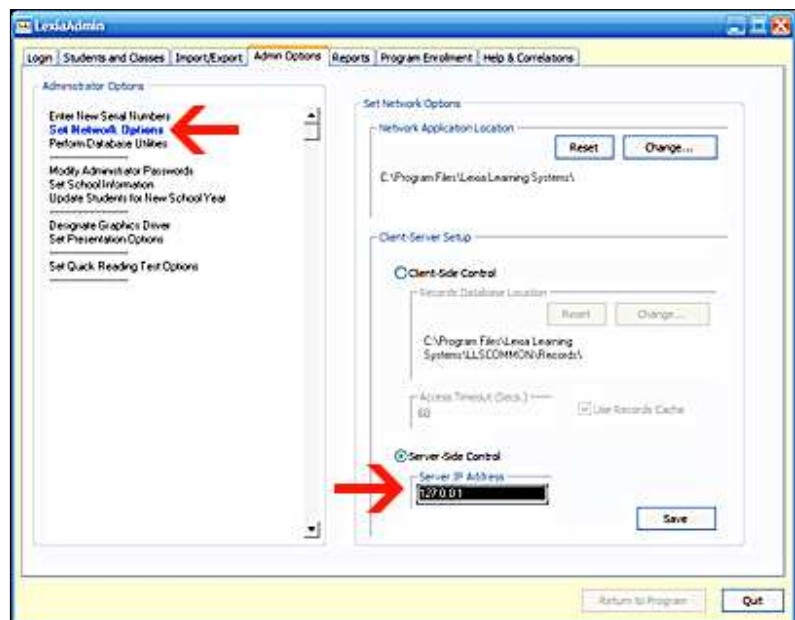
<http://www.lexialearning.com/uk/v4/updates.htm> (UK)

Download and install any updates that pertain to products you have purchased and installed. Note that the Admin Tool Version 1.2 update should *not* be applied if you have Quick Reading Test installed. Also note that the Lexia Data Monitor tool should reside on the server. See the section on the Lexia Data Monitor tool later in this document.

### **Step 4: Configuring the Student Software**

Launch any one of the installed Lexia programs on your workstation. You will receive a message that no students are installed, and a prompt to create new students. Select No at this prompt. Then click the Admin button in the lower-right corner of the student selection screen.

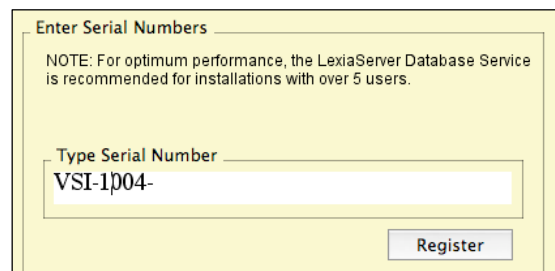
The Admin Tool will open. Click the Admin Options tab along the top, and then choose Set Network Options on the left side. On the right, select "Server Side Control" and supply the server's IP address. Then click the Save button.



If this is the first workstation you have set up, you will need to enter your product serial numbers. Choose Enter New Serial Numbers from the menu on the left side of the screen. Enter any serial numbers (stamped on the back of your CD jewel cases) exactly as they appear, including hyphens. Click the Register button after entering each number, and it will appear in the pane below. Repeat for each product, until they have all been entered.

Lexia recommends setting administrator passwords on the Admin Tool, to prevent student access. Click Modify Administrator Passwords on the left to set the passwords for the KeyAdmin and SysAdmin accounts. Passwords are not case-sensitive and limited to eight characters. Click Save after entering a password.

If you have Quick Reading Test installed, you have



the option of protecting it with a separate password. This can be set by choosing Set Quick Reading Test Options from the lefthand menu. Click Save after entering a password.

## **Step 5: Distributing the Student Software**

After one workstation has had its Lexia products installed, updated, and configured, you can use it as a template for installing the software on other workstations (target machines).

Copy the entire Lexia products directory on the first machine to other machines; this folder has different names depending on if your product is a US or UK version (see below). The machines you copy to must be running the same operating system as the first machine. Place the copied folder into C:\Program Files for Windows, or Macintosh HD: Applications for Macintosh systems.

..\Lexia Learning Systems	US products
..\Lexia UK	UK products

For Macintosh systems, we recommend using Remote Desktop or enabling file sharing on the first workstation and copying directly to the Applications folder of the target machines, rather than copying the folder up to a server and back down to the targets. This will help preserve folder permissions for the Lexia software folders.

After copying the software to each target machine, you will need to create a shortcut or alias for each product's executable on the desktop for students to click on.

## **Step 6: Testing**

Pick workstations at random and perform the following tests:

1. Launch a Lexia program and then click the Admin button to enter the Admin Tool. Test to see if the sysadmin and keyadmin passwords work.
2. Create a sample student and a sample class.
3. Go back to the student selection screen and sign in as that student and complete a single unit of an activity. This tests that your installation is good and that you can hear the audio part of the program.
4. In the Reports tab, create a test report.  
To do so, choose All Programs in the Step 1 panel. Then choose Student Roster in the Step 2 panel. Select your student or class, and then click the Create Report button. Your web browser should open, with a report of the student(s) who have been set up in the program.

## **Step 7: Recommended Server Components**

The Lexia Data Monitor is an optional downloadable tool available from our website:

<http://www.lexialearning.com/forschools/support/productupdates.html> (US)

<http://www.lexialearning.com/uk/v4/updates.htm> (UK)

The Data Monitor serves as a front-end for starting and stopping the Lexia Server service on the server, and allows for backups and repairs of the database to be run. The Data Monitor should only

be installed once, on the same server where the service is running. Instructions for its usage are available on our website, as FAQ #102108 (<http://lexialearning.com/support/faqs/102108.htm>)

A Lexia Connections file controls the maximum number of concurrent connections your Lexia database will allow, spread among all Lexia products (versus the serial numbers, which only control the number of students who can use any particular Lexia product at a time). If you anticipate more than 5 students simultaneously using Lexia programs, request a custom connections file from Lexia Customer Support. We will need to know the operating system your server is running, and how many connections you wish to permit. Connections files are cumulative, and we can always issue you more if you buy more licenses or wish to increase the number of connections. Connections files should be placed in the Licenses folder inside the LexiaServer folder on the server.

## **Step 8: Backup Procedures**

Lexia strongly recommends that you implement a backup strategy to protect your student data in the event of database corruption or hardware failure. Backups can be performed using the Lexia Data Monitor tool, through the Backup button on its Utilities tab. See Step 7 for more details about the Lexia Data Monitor and how to obtain the latest version.

Back up your data on a regular basis (at least once a week). You may also consider running the Compact and Repair function in the Data Monitor. This will create a backup of your data, as well as scan it for problems and repair any corruption detected.

## **Step 9: Documentation**

Please make a record of the following settings used during your installation. These will come in handy if you need to reinstall in the future.

### ***Products Installed, and Serial Numbers:***

Early Reading: \_\_\_\_\_

Primary Reading: \_\_\_\_\_

Foundation Reading: \_\_\_\_\_

Strategies for Older Students: \_\_\_\_\_

Quick Reading Test: \_\_\_\_\_

Cross-Trainer: \_\_\_\_\_

### ***Passwords:***

SysAdmin Password: \_\_\_\_\_

KeyAdmin Password: \_\_\_\_\_

QRT Password: \_\_\_\_\_